

UBE2E3 antibody

Cat. No. GTX118155

Host	Rabbit
Clonality	Polyclonal
Isotype	IgG
Applications	WB
Reactivity	Mouse

Package
 100 µl, 25 µl

Applications
Application Note

*Optimal dilutions/concentrations should be determined by the researcher.

Suggested dilution	Recommended dilution
--------------------	----------------------

WB	1:500-1:3000
----	--------------

Not tested in other applications.

Calculated MW	23 kDa. (Note)
----------------------	----------------------------------

Properties

Form	Liquid
-------------	--------

Buffer	PBS, 1% BSA, 20% Glycerol
---------------	---------------------------

Preservative	0.01% Thimerosal
---------------------	------------------

Storage	Store as concentrated solution. Centrifuge briefly prior to opening vial. For short-term storage (1-2 weeks), store at 4°C. For long-term storage, aliquot and store at -20°C or below. Avoid multiple freeze-thaw cycles.
----------------	--

Concentration	0.63 mg/ml (Please refer to the vial label for the specific concentration.)
----------------------	---

Immunogen	Recombinant protein encompassing a sequence within the center region of human UBE2E3. The exact sequence is proprietary.
------------------	--

Purification	Purified by antigen-affinity chromatography.
---------------------	--

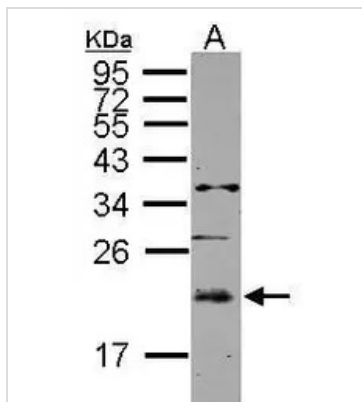
Conjugation	Unconjugated
--------------------	--------------

For laboratory research use only. Not for any clinical, therapeutic, or diagnostic use in humans or animals. Not for animal or human consumption.

Note
 Purchasers shall not, and agree not to enable third parties to, analyze, copy, reverse engineer or otherwise attempt to determine the structure or sequence of the product.


 For full product information, images and publications, please visit our [website](#).

DATA IMAGES

**GTX118155 WB Image**

Sample (50 ug of whole cell lysate)

A: mouse muscle

12% SDS PAGE

GTX118155 diluted at 1:2000



For full product information, images and publications, please visit our [website](#).