

## SC35 antibody [SC-35]

Cat. No. GTX11826

Host	Mouse
Clonality	Monoclonal
Isotype	IgG1
Applications	WB, ICC/IF, IP, ELISA, EM
Reactivity	Human, Mouse, Rat, Drosophila, Dog, Monkey, Frog, Newt

References ( 6 )

Package

100 µl

## Applications

## Application Note

\*Optimal dilutions/concentrations should be determined by the researcher.

Suggested dilution	Recommended dilution
WB	Assay dependent
ICC/IF	1:2,000
IP	Assay dependent
ELISA	Assay dependent
EM	Assay dependent

Not tested in other applications.

**Calculated MW** 25 kDa. ( [Note](#) )

## Product Note

Recognizes a phospho-epitope on the non-snRNP (small nuclear ribonucleoprotein particles) factor SC-35. The antibody reacts with the splicing factor SC-35 and with the SC-35-related non-snRNP factor SF2/ASF. The antibody labels SC-35 as a speckled pattern in the nucleoplasm, excluding the nucleoli. Other uses include inhibition and depletion of splicing activity in nuclear extracts and immunoaffinity purification.

## Properties

Form	Liquid
Buffer	Ascites
Preservative	15mM Sodium azide
Storage	Store as concentrated solution. Centrifuge briefly prior to opening vial. For short-term storage (1-2 weeks), store at 4°C. For long-term storage, aliquot and store at -20°C or below. Avoid multiple freeze-thaw cycles.
Immunogen	partially purified mammalian spliceosome.[1]
Purification	Unpurified
Conjugation	Unconjugated



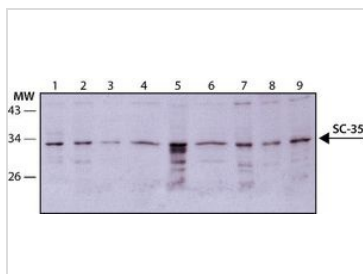
For full product information, images and publications, please visit our [website](#).

For laboratory research use only. Not for any clinical, therapeutic, or diagnostic use in humans or animals. Not for animal or human consumption.

## Note

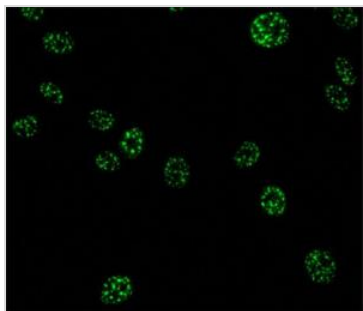
Purchasers shall not, and agree not to enable third parties to, analyze, copy, reverse engineer or otherwise attempt to determine the structure or sequence of the product.

## DATA IMAGES



### GTx11826 WB Image

WB analysis of (1)HeLa nuclear extract (2) HeLa (3) U87 (4) COS7 (5) P19 (6) Rat2 (7) CHO (8) MDBK (9) MDCK cell lysate using GTx11826 SC35 antibody [SC-35] at 1:500.



### GTx11826 ICC/IF Image

ICC/IF analysis of HS-68 cells using GTx11826 SC35 antibody [SC-35] at 1:2,000. Cells were fixed and permeabilized with 4% PFA followed by 0.5% Triton X-100.



For full product information, images and publications, please visit our [website](#).