

E2F3 antibody [PG30]

Cat. No. GTX11843

Host	Mouse
Clonality	Monoclonal
Isotype	IgG2a
Applications	WB, IP
Reactivity	Human

References (3)

Package

100 µl

Applications

Application Note

*Optimal dilutions/concentrations should be determined by the researcher.

Suggested dilution	Recommended dilution
WB	4-8 µg/ml
IP	Assay dependent

Not tested in other applications.

Calculated MW 49 kDa. ([Note](#))

Properties

Form	Liquid
Buffer	PBS, 1% BSA
Preservative	15mM Sodium azide
Storage	Store as concentrated solution. Centrifuge briefly prior to opening vial. For short-term storage (1-2 weeks), store at 4°C. For long-term storage, aliquot and store at -20°C or below. Avoid multiple freeze-thaw cycles.
Concentration	~2 mg/ml (Please refer to the vial label for the specific concentration.)
Immunogen	recombinant human E2F3.
Purification	Purified immunoglobulin
Conjugation	Unconjugated

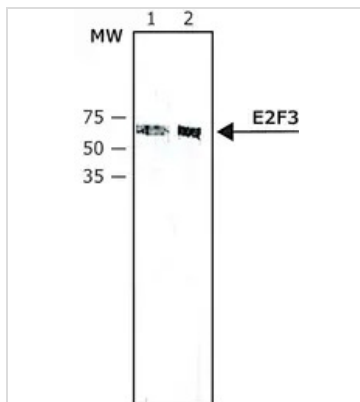
Note

For laboratory research use only. Not for any clinical, therapeutic, or diagnostic use in humans or animals. Not for animal or human consumption.

Purchasers shall not, and agree not to enable third parties to, analyze, copy, reverse engineer or otherwise attempt to determine the structure or sequence of the product.



For full product information, images and publications, please visit our [website](#).

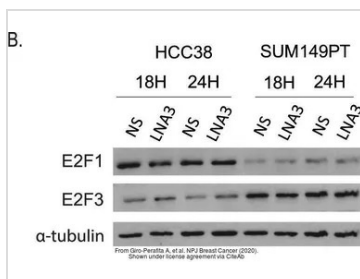
DATA IMAGES

GTx11843 WB Image

WB analysis of 293T cell lysates using GTx11843 E2F3 antibody [PG30].

Dilution :

Lane1 : 4 µg/mL

Lane2 : 8 µg/mL


GTx11843 WB Image

The data was published in the journal NPJ Breast Cancer in 2020. [PMID: 31934613](https://doi.org/10.1038/s41546-020-00000-0)



For full product information, images and publications, please visit our [website](https://www.genetex.com).