

GSTO1 antibody

Cat. No. GTX118439

Host	Rabbit
Clonality	Polyclonal
Isotype	IgG
Application	WB, IHC-P
Reactivity	Human, Mouse, Rat

Reference (2)
 Package
 100 µl, 25 µl

APPLICATION

Application Note

*Optimal dilutions/concentrations should be determined by the researcher.

Suggested dilution	Recommended dilution
WB	1:500-1:10000
IHC-P	1:100-1:1000

Not tested in other applications.

Calculated MW 28 kDa. ([Note](#))

PROPERTIES

Form	Liquid
Buffer	PBS, 20% Glycerol
Preservative	0.01% Thimerosal
Storage	Store as concentrated solution. Centrifuge briefly prior to opening vial. For short-term storage (1-2 weeks), store at 4°C. For long-term storage, aliquot and store at -20°C or below. Avoid multiple freeze-thaw cycles.
Concentration	1 mg/ml (Please refer to the vial label for the specific concentration.)
Immunogen	Recombinant protein encompassing a sequence within the center region of human GSTO1. The exact sequence is proprietary.
Purification	Purified by antigen-affinity chromatography.
Conjugation	Unconjugated

Note

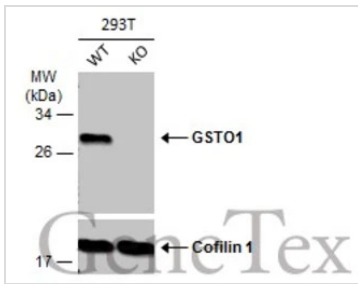
For laboratory research use only. Not for any clinical, therapeutic, or diagnostic use in humans or animals. Not for animal or human consumption.

Purchasers shall not, and agree not to enable third parties to, analyze, copy, reverse engineer or otherwise attempt to determine the structure or sequence of the product.



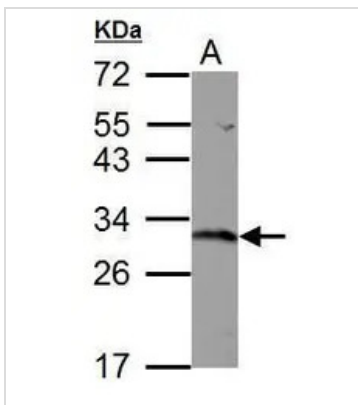
For full product information, images and publications, please visit our [website](#).

DATA IMAGES



GTx118439 WB Image

Wild-type (WT) and GSTO1 knockout (KO) 293T cell extracts (30 µg) were separated by 12% SDS-PAGE, and the membrane was blotted with GSTO1 antibody (GTx118439) diluted at 1:1000. The HRP-conjugated anti-rabbit IgG antibody (GTx213110-01) was used to detect the primary antibody.



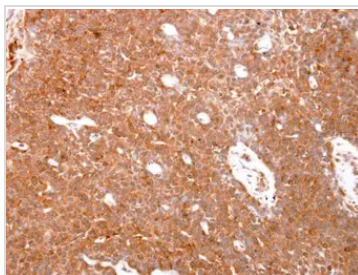
GTx118439 WB Image

Sample (30 ug of whole cell lysate)

A: HepG2

12% SDS PAGE

GTx118439 diluted at 1:5000



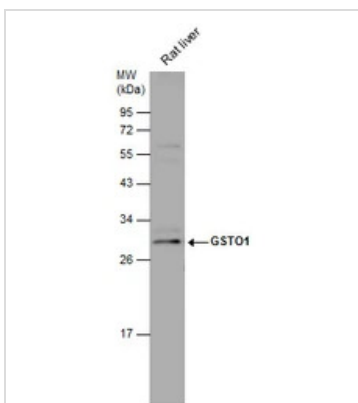
GTx118439 IHC-P Image

GSTO1 antibody detects GSTO1 protein at cytoplasm on human lung carcinoma by immunohistochemical analysis.

Sample: Paraffin-embedded human lung carcinoma.

GSTO1 antibody (GTx118439) diluted at 1:500.

Antigen Retrieval: Trilogy™ (EDTA based, pH 8.0) buffer, 15min



GTx118439 WB Image

Rat tissue extract (50 µg) was separated by 12% SDS-PAGE, and the membrane was blotted with GSTO1 antibody (GTx118439) diluted at 1:5000.



For full product information, images and publications, please visit our [website](https://www.genetex.com).