

TKTL2 antibody [N1N3]

Cat. No. GTX118468

Host	Rabbit
Clonality	Polyclonal
Isotype	IgG
Applications	WB
Reactivity	Human, Mouse

References (1)

Package

100 µl, 25 µl

Applications

Application Note

*Optimal dilutions/concentrations should be determined by the researcher.

Suggested dilution	Recommended dilution
WB	1:500-1:3000

Not tested in other applications.

Calculated MW 68 kDa. ([Note](#))

Properties

Form	Liquid
Buffer	0.1M Tris, 0.1M Glycine, 20% Glycerol
Preservative	0.01% Thimerosal
Storage	Store as concentrated solution. Centrifuge briefly prior to opening vial. For short-term storage (1-2 weeks), store at 4°C. For long-term storage, aliquot and store at -20°C or below. Avoid multiple freeze-thaw cycles.
Concentration	1 mg/ml (Please refer to the vial label for the specific concentration.)
Immunogen	Recombinant protein encompassing a sequence within the center region of human TKTL2. The exact sequence is proprietary.
Purification	Purified by antigen-affinity chromatography.
Conjugation	Unconjugated

Note

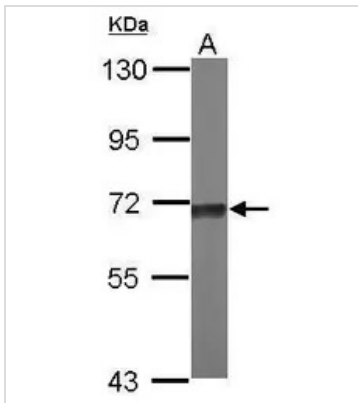
For laboratory research use only. Not for any clinical, therapeutic, or diagnostic use in humans or animals. Not for animal or human consumption.

Purchasers shall not, and agree not to enable third parties to, analyze, copy, reverse engineer or otherwise attempt to determine the structure or sequence of the product.



For full product information, images and publications, please visit our [website](#).

DATA IMAGES



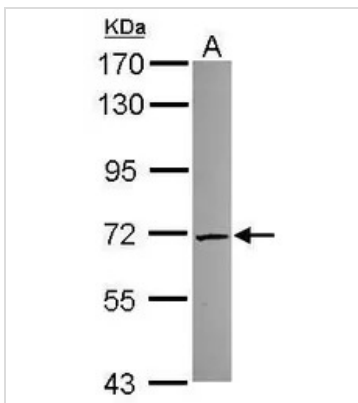
GTx118468 WB Image

Sample (50 ug of whole cell lysate)

A: Mouse brain

7.5% SDS PAGE

GTx118468 diluted at 1:1000



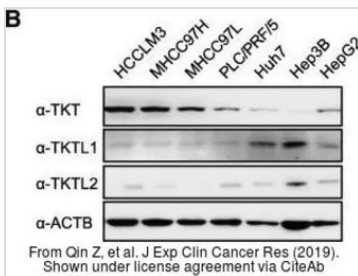
GTx118468 WB Image

Sample (30 ug of whole cell lysate)

A: 293T

7.5% SDS PAGE

GTx118468 diluted at 1:2000



GTx118468 WB Image

The data was published in the journal J Exp Clin Cancer Res in 2019. [PMID: 30971297](https://pubmed.ncbi.nlm.nih.gov/30971297/)



For full product information, images and publications, please visit our [website](https://www.genetex.com).