

## EIF1A antibody

Cat. No. GTX118482

Host	Rabbit
Clonality	Polyclonal
Isotype	IgG
Applications	WB, ICC/IF, IHC-P
Reactivity	Human, Rat

Package  
100 µl, 25 µl

## Applications

## Application Note

\*Optimal dilutions/concentrations should be determined by the researcher.

Suggested dilution	Recommended dilution
WB	1:500-1:3000
ICC/IF	1:100-1:1000
IHC-P	1:100-1:1000

Not tested in other applications.

Calculated MW 16 kDa. ( [Note](#) )

## Properties

Form	Liquid
Buffer	0.1M Tris, 0.1M Glycine, 20% Glycerol
Preservative	0.01% Thimerosal
Storage	Store as concentrated solution. Centrifuge briefly prior to opening vial. For short-term storage (1-2 weeks), store at 4°C. For long-term storage, aliquot and store at -20°C or below. Avoid multiple freeze-thaw cycles.
Concentration	0.84 mg/ml (Please refer to the vial label for the specific concentration.)
Immunogen	Recombinant protein encompassing a sequence within the center region of human EIF1AY. The exact sequence is proprietary.
Purification	Purified by antigen-affinity chromatography.
Conjugation	Unconjugated

## Note

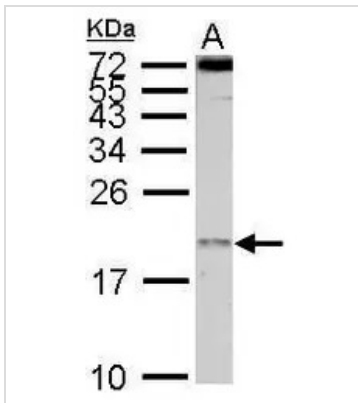
For laboratory research use only. Not for any clinical, therapeutic, or diagnostic use in humans or animals. Not for animal or human consumption.

Purchasers shall not, and agree not to enable third parties to, analyze, copy, reverse engineer or otherwise attempt to determine the structure or sequence of the product.



For full product information, images and publications, please visit our [website](#).

## DATA IMAGES



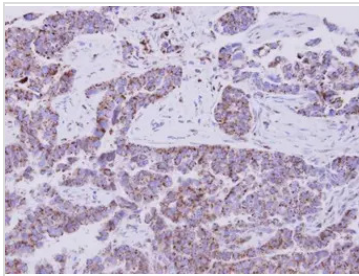
### GTK118482 WB Image

EIF1AY antibody detects EIF1AY protein by Western blot analysis.

A. 30 µg PC-12 whole cell lysate/extract

15 % SDS-PAGE

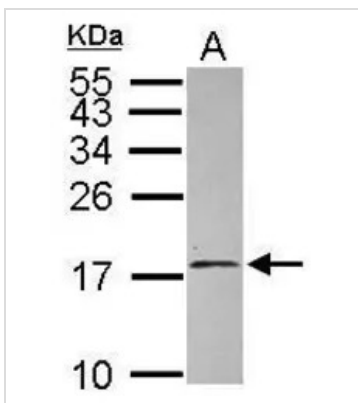
EIF1AY antibody (GTK118482) dilution: 1:1000



### GTK118482 IHC-P Image

Immunohistochemical analysis of paraffin-embedded human lung adenocarcinoma, using EIF1AY(GTK118482) antibody at 1:500 dilution.

Antigen Retrieval: Trilogy™ (EDTA based, pH 8.0) buffer, 15min



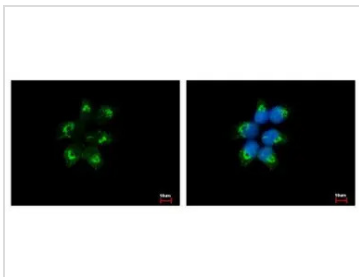
### GTK118482 WB Image

Sample (30 ug of whole cell lysate)

A: Raji

15% SDS PAGE

GTK118482 diluted at 1:500



### GTK118482 ICC/IF Image

EIF1AY antibody detects EIF1AY protein at Golgi apparatus by immunofluorescent analysis.

Sample: A431 cells were fixed in ice-cold Methanol for 5 min.

Green: EIF1AY protein stained by EIF1AY antibody (GTK118482) diluted at 1:500.

Blue: Hoechst 33343 staining.



For full product information, images and publications, please visit our [website](https://www.genetex.com).