

SNX25 antibody [N2C1], Internal

Cat. No. GTX118491

| | |
|---------------------|--------------|
| Host | Rabbit |
| Clonality | Polyclonal |
| Isotype | IgG |
| Applications | WB, IHC-P |
| Reactivity | Human, Mouse |

Package
100 µl, 25 µl

Applications

Application Note

*Optimal dilutions/concentrations should be determined by the researcher.

| Suggested dilution | Recommended dilution |
|--------------------|----------------------|
| WB | 1:500-1:3000 |
| IHC-P | 1:100-1:1000 |

Not tested in other applications.

Calculated MW 98 kDa. ([Note](#))

Properties

| | |
|----------------------|--|
| Form | Liquid |
| Buffer | 0.1M Tris, 0.1M Glycine, 20% Glycerol |
| Preservative | 0.01% Thimerosal |
| Storage | Store as concentrated solution. Centrifuge briefly prior to opening vial. For short-term storage (1-2 weeks), store at 4°C. For long-term storage, aliquot and store at -20°C or below. Avoid multiple freeze-thaw cycles. |
| Concentration | 0.92 mg/ml (Please refer to the vial label for the specific concentration.) |
| Immunogen | Recombinant protein encompassing a sequence within the N-terminus region of human SNX25. The exact sequence is proprietary. |
| Purification | Purified by antigen-affinity chromatography. |
| Conjugation | Unconjugated |

Note

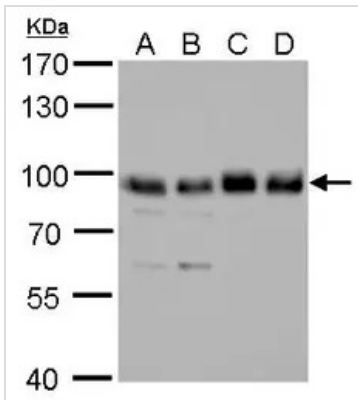
For laboratory research use only. Not for any clinical, therapeutic, or diagnostic use in humans or animals. Not for animal or human consumption.

Purchasers shall not, and agree not to enable third parties to, analyze, copy, reverse engineer or otherwise attempt to determine the structure or sequence of the product.



For full product information, images and publications, please visit our [website](#).

DATA IMAGES



GTX118491 WB Image

SNX25 antibody detects SNX25 protein by Western blot analysis.

A. 30 μ g 293T whole cell lysate/extract

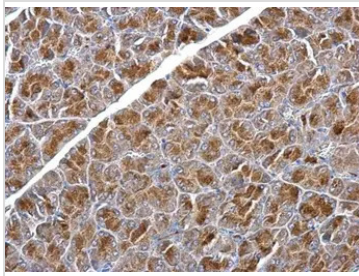
B. 30 μ g A431 whole cell lysate/extract

C. 30 μ g HeLa whole cell lysate/extract

D. 30 μ g HepG2 whole cell lysate/extract

7.5 % SDS-PAGE

SNX25 antibody (GTX118491) dilution: 1:1000



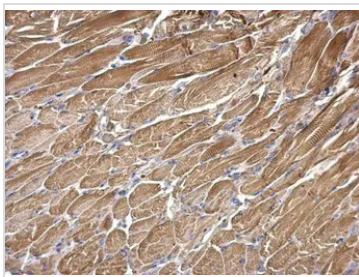
GTX118491 IHC-P Image

SNX25 antibody [N2C1], Internal detects SNX25 protein at cytosol on mouse pancreas by immunohistochemical analysis.

Sample: Paraffin-embedded mouse pancreas.

SNX25 antibody [N2C1], Internal (GTX118491) dilution: 1:500.

Antigen Retrieval: Trilogy™ (EDTA based, pH 8.0) buffer, 15min



GTX118491 IHC-P Image

SNX25 antibody [N2C1], Internal detects SNX25 protein at cytosol on mouse muscle by immunohistochemical analysis.

Sample: Paraffin-embedded mouse muscle.

SNX25 antibody [N2C1], Internal (GTX118491) dilution: 1:500.

Antigen Retrieval: Trilogy™ (EDTA based, pH 8.0) buffer, 15min



For full product information, images and publications, please visit our [website](https://www.genetex.com).