

PTGR1 antibody [N1C2]

Cat. No. GTX118527

Host	Rabbit
Clonality	Polyclonal
Isotype	IgG
Application	WB
Reactivity	Human

Reference (1)

★★★★☆ Review (1)

Package

100 µl, 25 µl

APPLICATION

Application Note

*Optimal dilutions/concentrations should be determined by the researcher.

Suggested dilution	Recommended dilution
WB	1:500-1:3000
Not tested in other applications.	

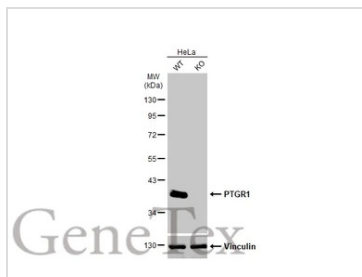
Calculated MW 36 kDa. ([Note](#))

PROPERTIES

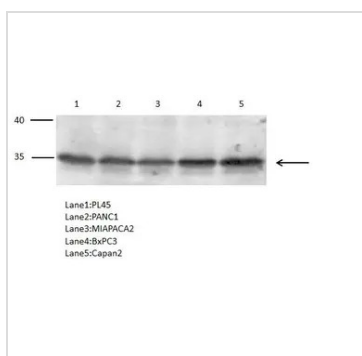
Form	Liquid
Buffer	0.1M Tris, 0.1M Glycine, 20% Glycerol
Preservative	0.01% Thimerosal
Storage	Store as concentrated solution. Centrifuge briefly prior to opening vial. For short-term storage (1-2 weeks), store at 4°C. For long-term storage, aliquot and store at -20°C or below. Avoid multiple freeze-thaw cycles.
Concentration	0.93 mg/ml (Please refer to the vial label for the specific concentration.)
Immunogen	Recombinant protein encompassing a sequence within the center region of human PTGR1. The exact sequence is proprietary.
Purification	Purified by antigen-affinity chromatography.
Conjugation	Unconjugated
Note	<p>For laboratory research use only. Not for any clinical, therapeutic, or diagnostic use in humans or animals. Not for animal or human consumption.</p> <p>Purchasers shall not, and agree not to enable third parties to, analyze, copy, reverse engineer or otherwise attempt to determine the structure or sequence of the product.</p>



For full product information, images and publications, please visit our [website](#).

DATA IMAGES

GTKX118527 WB Image

Wild-type (WT) and PTGR1 knockout (KO) HeLa cell extracts (30 µg) were separated by 10% SDS-PAGE, and the membrane was blotted with PTGR1 antibody [N1C2] (GTKX118527) diluted at 1:500. The HRP-conjugated anti-rabbit IgG antibody (GTKX213110-01) was used to detect the primary antibody.


GTKX118527 WB Image

Prostaglandin reductase 1 antibody [N1C2] detects Prostaglandin reductase 1 protein by Western blot analysis.

- A. 40 µg PL45 whole cell lysate/extract
- B. 40 µg PANC1 whole cell lysate/extract
- C. 40 µg MIAPACA2 whole cell lysate/extract
- D. 40 µg BxPC3 whole cell lysate/extract
- E. 40 µg Capan2 whole cell lysate/extract

Prostaglandin reductase 1 antibody [N1C2] (GTKX118527) dilution: 1:500



For full product information, images and publications, please visit our [website](https://www.genetex.com).