

DPPA4 antibody [N1C3]

Cat. No. GTX118569

Host	Rabbit
Clonality	Polyclonal
Isotype	IgG
Applications	WB, ICC/IF, IHC-P
Reactivity	Human

Package

100 µl, 25 µl

Applications

Application Note

*Optimal dilutions/concentrations should be determined by the researcher.

Suggested dilution	Recommended dilution
WB	1:500-1:3000
ICC/IF	1:100-1:1000
IHC-P	1:100-1:1000

Not tested in other applications.

Calculated MW 34 kDa. ([Note](#))

Properties

Form	Liquid
Buffer	0.1M Tris, 0.1M Glycine, 20% Glycerol
Preservative	0.01% Thimerosal
Storage	Store as concentrated solution. Centrifuge briefly prior to opening vial. For short-term storage (1-2 weeks), store at 4°C. For long-term storage, aliquot and store at -20°C or below. Avoid multiple freeze-thaw cycles.
Concentration	1 mg/ml (Please refer to the vial label for the specific concentration.)
Immunogen	Recombinant protein encompassing a sequence within the center region of human DPPA4. The exact sequence is proprietary.
Purification	Purified by antigen-affinity chromatography.
Conjugation	Unconjugated

Note

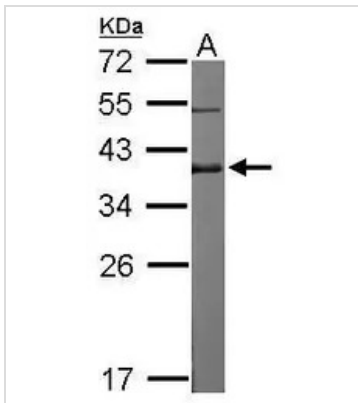
For laboratory research use only. Not for any clinical, therapeutic, or diagnostic use in humans or animals. Not for animal or human consumption.

Purchasers shall not, and agree not to enable third parties to, analyze, copy, reverse engineer or otherwise attempt to determine the structure or sequence of the product.



For full product information, images and publications, please visit our [website](#).

DATA IMAGES



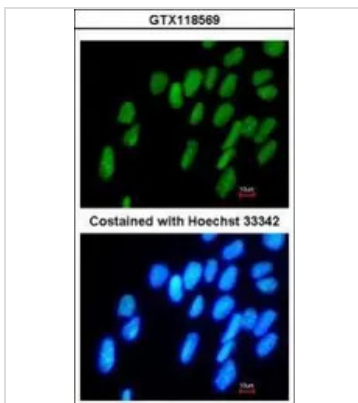
GTX118569 WB Image

Sample (20 ug of whole cell lysate)

A: human ESC

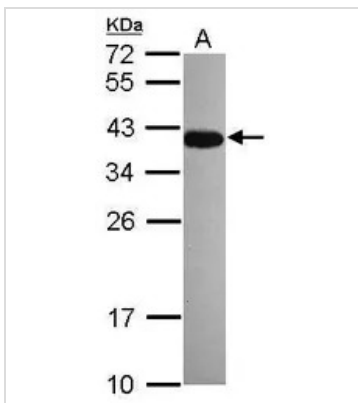
12% SDS PAGE

GTX118569 diluted at 1:500



GTX118569 ICC/IF Image

Immunofluorescence analysis of paraformaldehyde-fixed Human ESC, using DPPA4(GTX118569) antibody at 1:400 dilution.



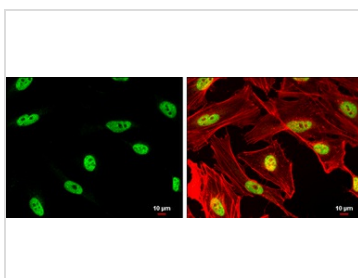
GTX118569 WB Image

Sample (30 ug of whole cell lysate)

A: NT2D1

12% SDS PAGE

GTX118569 diluted at 1:500



GTX118569 ICC/IF Image

DPPA4 antibody [N1C3] detects DPPA4 protein at nucleus by immunofluorescent analysis.

Sample: HeLa cells were fixed in 4% paraformaldehyde at RT for 15 min.

Green: DPPA4 protein stained by DPPA4 antibody [N1C3] (GTX118569) diluted at 1:500.

Red: phalloidin, a cytoskeleton marker, diluted at 1:200.

Scale bar = 10 μm.



For full product information, images and publications, please visit our [website](https://www.genetex.com).