

RBPMS antibody

Cat. No. GTX118619

Host	Rabbit
Clonality	Polyclonal
Isotype	IgG
Application	WB, ICC/IF, IHC-P
Reactivity	Human, Mouse, Rat, Monkey

Reference (84)

Package

100 µl, 25 µl

APPLICATION

Application Note

*Optimal dilutions/concentrations should be determined by the researcher.

Suggested dilution	Recommended dilution
WB	1:500-1:3000
ICC/IF	1:100-1:1000
IHC-P	1:100-1:1000

Not tested in other applications.

Calculated MW 22 kDa. ([Note](#))

PROPERTIES

Form	Liquid
Buffer	PBS, 20% Glycerol
Preservative	0.025% ProClin 300
Storage	Store as concentrated solution. Centrifuge briefly prior to opening vial. For short-term storage (1-2 weeks), store at 4°C. For long-term storage, aliquot and store at -20°C or below. Avoid multiple freeze-thaw cycles.
Concentration	1 mg/ml (Please refer to the vial label for the specific concentration.)
Immunogen	Recombinant protein encompassing a sequence within the center region of human RBPMS. The exact sequence is proprietary.
Purification	Purified by antigen-affinity chromatography.
Conjugation	Unconjugated

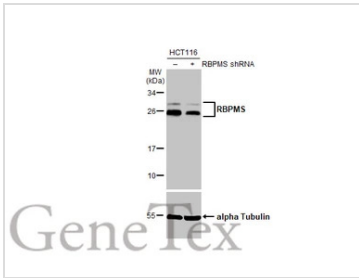
Note

For laboratory research use only. Not for any clinical, therapeutic, or diagnostic use in humans or animals. Not for animal or human consumption.

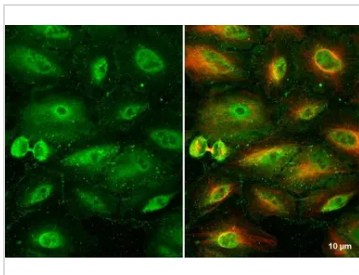
Purchasers shall not, and agree not to enable third parties to, analyze, copy, reverse engineer or otherwise attempt to determine the structure or sequence of the product.



For full product information, images and publications, please visit our [website](#).

DATA IMAGES

GTx118619 WB Image

Non-transfected (-) and transfected (+) HCT-116 whole cell extract were separated by 12% SDS-PAGE, and the membrane was blotted with RBPMS antibody (GTx118619) diluted at 1:500. The HRP-conjugated anti-rabbit IgG antibody (GTx213110-01) was used to detect the primary antibody.

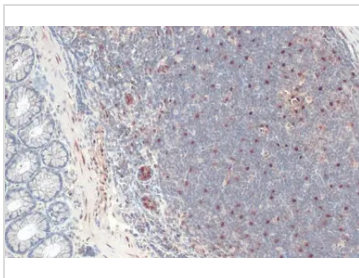

GTx118619 ICC/IF Image

RBPMS antibody detects RBPMS protein at cytoplasm and nucleus by immunofluorescent analysis.

Sample: A549 cells were fixed in 4% paraformaldehyde at RT for 15 min.

Green: RBPMS stained by RBPMS antibody (GTx118619) diluted at 1:500.

Red: alpha Tubulin, a cytoskeleton marker, stained by alpha Tubulin antibody [GT114] (GTx628802) diluted at 1:1000.

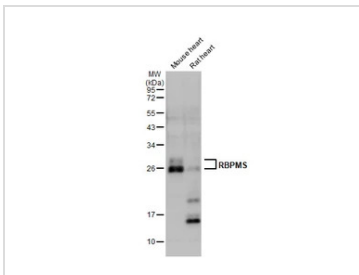

GTx118619 IHC-P Image

RBPMS antibody detects RBPMS protein at cytoplasm and nucleus by immunohistochemical analysis.

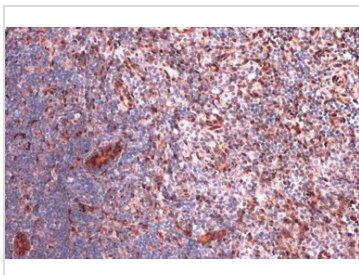
Sample: Paraffin-embedded rat colon.

RBPMS stained by RBPMS antibody (GTx118619) diluted at 1:500.

Antigen Retrieval: Citrate buffer, pH 6.0, 15 min


GTx118619 WB Image

Various tissue extracts (50 µg) were separated by 12% SDS-PAGE, and the membrane was blotted with RBPMS antibody (GTx118619) diluted at 1:3000. The HRP-conjugated anti-rabbit IgG antibody (GTx213110-01) was used to detect the primary antibody.


GTx118619 IHC-P Image

RBPMS antibody detects RBPMS protein at cytoplasm and nucleus by immunohistochemical analysis.

Sample: Paraffin-embedded rat lymph node.

RBPMS stained by RBPMS antibody (GTx118619) diluted at 1:2000.

Antigen Retrieval: Citrate buffer, pH 6.0, 15 min



For full product information, images and publications, please visit our [website](https://www.genetex.com).