

## RBPMS antibody

Cat. No. GTX118619

Host	Rabbit
Clonality	Polyclonal
Isotype	IgG
Applications	WB, ICC/IF, IHC-P, IHC-Wm
Reactivity	Human, Mouse, Rat, Monkey

References ( 107 )

Package

100 µl, 25 µl

## Applications

## Application Note

\*Optimal dilutions/concentrations should be determined by the researcher.

Suggested dilution	Recommended dilution
WB	1:500-1:3000
ICC/IF	1:100-1:1000
IHC-P	1:100-1:1000
IHC-Wm	Assay dependent

Not tested in other applications.

Calculated MW 22 kDa. ( [Note](#) )

## Properties

Form	Liquid
Buffer	PBS, 20% Glycerol
Preservative	0.025% ProClin 300
Storage	Store as concentrated solution. Centrifuge briefly prior to opening vial. For short-term storage (1-2 weeks), store at 4°C. For long-term storage, aliquot and store at -20°C or below. Avoid multiple freeze-thaw cycles.
Concentration	0.96 mg/ml (Please refer to the vial label for the specific concentration.)
Immunogen	Recombinant protein encompassing a sequence within the center region of human RBPMS. The exact sequence is proprietary.
Purification	Purified by antigen-affinity chromatography.
Conjugation	Unconjugated

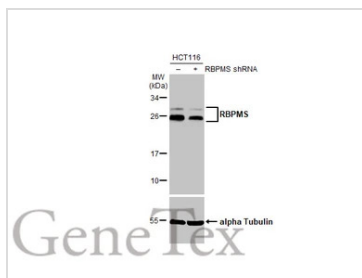
For full product information, images and publications, please visit our [website](#).

For laboratory research use only. Not for any clinical, therapeutic, or diagnostic use in humans or animals. Not for animal or human consumption.

## Note

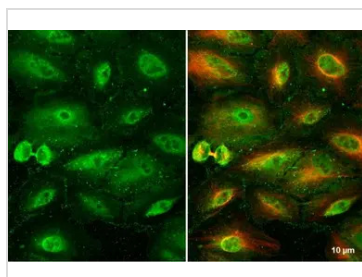
Purchasers shall not, and agree not to enable third parties to, analyze, copy, reverse engineer or otherwise attempt to determine the structure or sequence of the product.

## DATA IMAGES



### GTX118619 WB Image

Non-transfected (–) and transfected (+) HCT-116 whole cell extract were separated by 12% SDS-PAGE, and the membrane was blotted with RBPMS antibody (GTX118619) diluted at 1:500. The HRP-conjugated anti-rabbit IgG antibody (GTX213110-01) was used to detect the primary antibody.



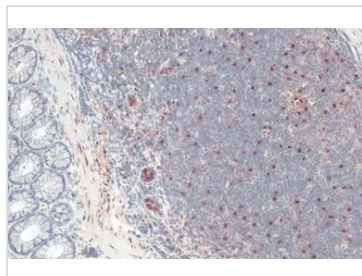
### GTX118619 ICC/IF Image

RBPMS antibody detects RBPMS protein at cytoplasm and nucleus by immunofluorescent analysis.

Sample: A549 cells were fixed in 4% paraformaldehyde at RT for 15 min.

Green: RBPMS stained by RBPMS antibody (GTX118619) diluted at 1:500.

Red: alpha Tubulin, a cytoskeleton marker, stained by alpha Tubulin antibody [GT114] (GTX628802) diluted at 1:1000.



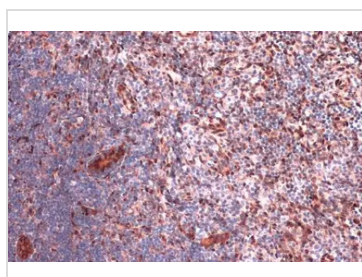
### GTX118619 IHC-P Image

RBPMS antibody detects RBPMS protein at cytoplasm and nucleus by immunohistochemical analysis.

Sample: Paraffin-embedded rat colon.

RBPMS stained by RBPMS antibody (GTX118619) diluted at 1:500.

Antigen Retrieval: Citrate buffer, pH 6.0, 15 min



### GTX118619 IHC-P Image

RBPMS antibody detects RBPMS protein at cytoplasm and nucleus by immunohistochemical analysis.

Sample: Paraffin-embedded rat lymph node.

RBPMS stained by RBPMS antibody (GTX118619) diluted at 1:2000.

Antigen Retrieval: Citrate buffer, pH 6.0, 15 min



For full product information, images and publications, please visit our [website](https://www.genetex.com).