

## NFIX antibody [N2C2], Internal

Cat. No. GTX118630

Host	Rabbit
Clonality	Polyclonal
Isotype	IgG
Application	WB, ICC/IF, IHC-P
Reactivity	Human, Mouse, Rat

Package  
100 µl, 25 µl

## APPLICATION

## Application Note

\*Optimal dilutions/concentrations should be determined by the researcher.

Suggested dilution	Recommended dilution
WB	1:500-1:3000
ICC/IF	Assay dependent
IHC-P	1:100-1:1000

Not tested in other applications.

Calculated MW 55 kDa. ( [Note](#) )

## PROPERTIES

Form	Liquid
Buffer	PBS, 1% BSA, 20% Glycerol
Preservative	0.025% ProClin 300
Storage	Store as concentrated solution. Centrifuge briefly prior to opening vial. For short-term storage (1-2 weeks), store at 4°C. For long-term storage, aliquot and store at -20°C or below. Avoid multiple freeze-thaw cycles.
Concentration	0.31 mg/ml (Please refer to the vial label for the specific concentration.)
Immunogen	Recombinant protein encompassing a sequence within the center region of human NFIX. The exact sequence is proprietary.
Purification	Purified by antigen-affinity chromatography.
Conjugation	Unconjugated

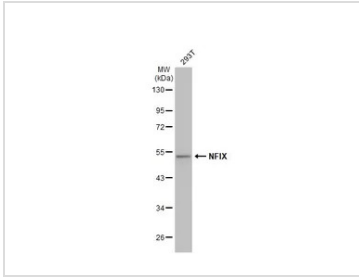
## Note

For laboratory research use only. Not for any clinical, therapeutic, or diagnostic use in humans or animals. Not for animal or human consumption.

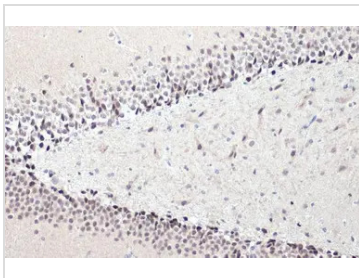
Purchasers shall not, and agree not to enable third parties to, analyze, copy, reverse engineer or otherwise attempt to determine the structure or sequence of the product.



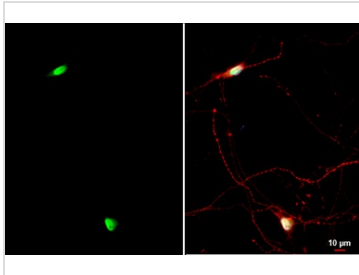
For full product information, images and publications, please visit our [website](#).

**DATA IMAGES**

**GTX118630 WB Image**

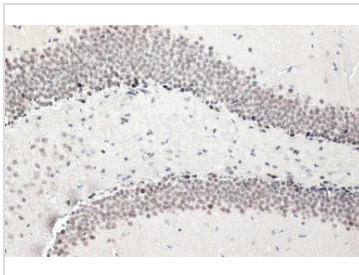
Whole cell extract (30 µg) was separated by 10% SDS-PAGE, and the membrane was blotted with NFIX antibody [N2C2], Internal (GTX118630) diluted at 1:10000. The HRP-conjugated anti-rabbit IgG antibody (GTX213110-01) was used to detect the primary antibody.


**GTX118630 IHC-P Image**

NFIX antibody [N2C2], Internal detects NFIX protein at nucleus by immunohistochemical analysis.  
Sample: Paraffin-embedded rat hippocampus.  
NFIX stained by NFIX antibody [N2C2], Internal (GTX118630) diluted at 1:2000.  
Antigen Retrieval: Citrate buffer, pH 6.0, 15 min


**GTX118630 ICC/IF Image**

NFIX antibody [N2C2], Internal detects NFIX protein by immunofluorescent analysis.  
Sample: DIV9 rat hippocampal neuron cells were fixed in 4% paraformaldehyde at RT for 15 min.  
Green: NFIX stained by NFIX antibody [N2C2], Internal (GTX118630) diluted at 1:500.  
Red: Tau, a Axon marker, stained by Tau antibody [GT287] (GTX634809) diluted at 1:500.  
Blue: Fluoroshield with DAPI (GTX30920).


**GTX118630 IHC-P Image**

NFIX antibody [N2C2], Internal detects NFIX protein at nucleus by immunohistochemical analysis.  
Sample: Paraffin-embedded mouse hippocampus.  
NFIX stained by NFIX antibody [N2C2], Internal (GTX118630) diluted at 1:2000.  
Antigen Retrieval: Citrate buffer, pH 6.0, 15 min



For full product information, images and publications, please visit our [website](https://www.genetex.com).