

p53 antibody [C2C3], C-term

Cat. No. GTX118730

| | |
|--------------|---------------|
| Host | Rabbit |
| Clonality | Polyclonal |
| Isotype | IgG |
| Applications | WB, IHC-P, IP |
| Reactivity | Human, Mouse |

Package
100 µl, 25 µl

Applications

Application Note

*Optimal dilutions/concentrations should be determined by the researcher.

| Suggested dilution | Recommended dilution |
|--------------------|----------------------|
| WB | 1:500-1:3000 |
| IHC-P | 1:100-1:1000 |
| IP | 1:500-1:1000 |

Not tested in other applications.

Calculated MW 44 kDa. ([Note](#))

Properties

| | |
|---------------|--|
| Form | Liquid |
| Buffer | PBS, 1% BSA, 20% Glycerol |
| Preservative | 0.01% Thimerosal |
| Storage | Store as concentrated solution. Centrifuge briefly prior to opening vial. For short-term storage (1-2 weeks), store at 4°C. For long-term storage, aliquot and store at -20°C or below. Avoid multiple freeze-thaw cycles. |
| Concentration | 1 mg/ml (Please refer to the vial label for the specific concentration.) |
| Immunogen | Carrier-protein conjugated synthetic peptide encompassing a sequence within the C-terminus region of human p53. The exact sequence is proprietary. |
| Purification | Purified by antigen-affinity chromatography. |
| Conjugation | Unconjugated |

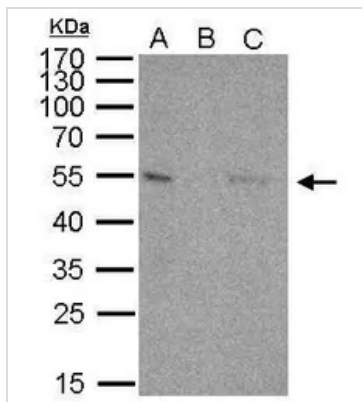
Note

For laboratory research use only. Not for any clinical, therapeutic, or diagnostic use in humans or animals. Not for animal or human consumption.

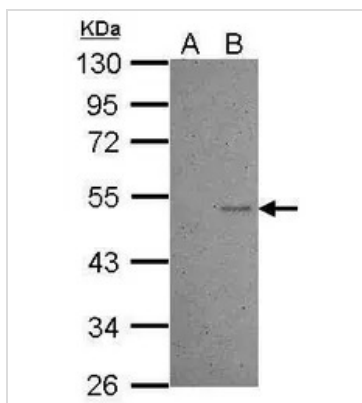
Purchasers shall not, and agree not to enable third parties to, analyze, copy, reverse engineer or otherwise attempt to determine the structure or sequence of the product.



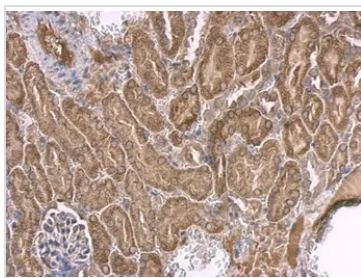
For full product information, images and publications, please visit our [website](#).

DATA IMAGES

GTx118730 IP Image

p53 antibody immunoprecipitates p53 protein in IP experiments. IP Sample: 1000 µg 293T whole cell lysate/extract A. 40 µg 293T whole cell lysate/extract B. Control with 2.5 µg of preimmune rabbit IgG C. Immunoprecipitation of p53 protein by 2.5 µg of p53 antibody (GTx118730) 12% SDS-PAGE The immunoprecipitated p53 protein was detected by p53 antibody (GTx118730) diluted at 1:1000. EasyBlot anti-rabbit IgG (GTx221666-01) was used as a secondary reagent.


GTx118730 WB Image

Sample (30 ug of whole cell lysate)
A: HCT116 cells with mock treatment for 24hr
B: HCT116 cells with 30uM cisplatin treatment for 24hr
10% SDS PAGE
GTx118730 diluted at 1:1000


GTx118730 IHC-P Image

p53 antibody [C2C3], C-term detects p53 protein at cytosol on mouse kidney by immunohistochemical analysis.

Sample: Paraffin-embedded mouse kidney.
p53 antibody [C2C3], C-term (GTx118730) dilution: 1:500.

Antigen Retrieval: Trilogy™ (EDTA based, pH 8.0) buffer, 15min



For full product information, images and publications, please visit our [website](https://www.genetex.com).