

TSG101 antibody

Cat. No. GTX118736

Host	Rabbit
Clonality	Polyclonal
Isotype	IgG
Applications	WB, IHC-P, IP, ELISA, Sandwich ELISA
Reactivity	Human, Mouse, Rat

References (31)

Package

100 µl, 25 µl

Applications

Application Note

*Optimal dilutions/concentrations should be determined by the researcher.

Suggested dilution	Recommended dilution
WB	1:500-1:3000
IHC-P	1:100-1:1000
IP	1:100-1:500
ELISA	1:1000-1:10000
Sandwich ELISA	Assay dependent

Note : Capture: GTX118736 , Detection: GTX70255

Not tested in other applications.

Calculated MW 44 kDa. ([Note](#))

Properties

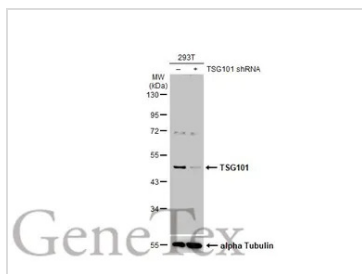
Form	Liquid
Buffer	PBS, 20% Glycerol
Preservative	0.025% ProClin 300
Storage	Store as concentrated solution. Centrifuge briefly prior to opening vial. For short-term storage (1-2 weeks), store at 4°C. For long-term storage, aliquot and store at -20°C or below. Avoid multiple freeze-thaw cycles.
Concentration	1.42 mg/ml (Please refer to the vial label for the specific concentration.)
Immunogen	Recombinant protein encompassing a sequence within the center region of human TSG101. The exact sequence is proprietary.
Purification	Purified by antigen-affinity chromatography.
Conjugation	Unconjugated

For full product information, images and publications, please visit our [website](#).

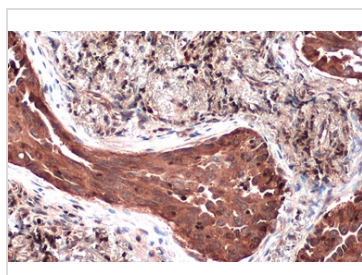
For laboratory research use only. Not for any clinical, therapeutic, or diagnostic use in humans or animals. Not for animal or human consumption.

Note

Purchasers shall not, and agree not to enable third parties to, analyze, copy, reverse engineer or otherwise attempt to determine the structure or sequence of the product.

DATA IMAGES

GTx118736 WB Image

Non-transfected (–) and transfected (+) 293T whole cell extracts (30 µg) were separated by 10% SDS-PAGE, and the membrane was blotted with TSG101 antibody (GTx118736) diluted at 1:500. The HRP-conjugated anti-rabbit IgG antibody (GTx213110-01) was used to detect the primary antibody, and the signal was developed with Trident ECL plus-Enhanced.

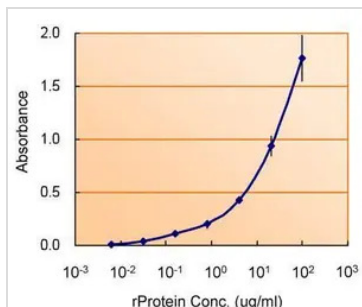

GTx118736 IHC-P Image

TSG101 antibody detects TSG101 protein at cytoplasm by immunohistochemical analysis.

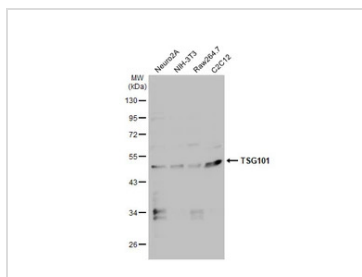
Sample: Paraffin-embedded human lung cancer.

TSG101 stained by TSG101 antibody (GTx118736) diluted at 1:500.

Antigen Retrieval: Citrate buffer, pH 6.0, 15 min


GTx118736 ELISA Image

ELISA detection of TSG101 using GTx118736 for capture at a concentration of 5 µg/mL and GTx70255 for detection at a concentration of 1.5 µg/mL.


GTx118736 WB Image

Various whole cell extracts (30 µg) were separated by 10% SDS-PAGE, and the membrane was blotted with TSG101 antibody (GTx118736) diluted at 1:1000. The HRP-conjugated anti-rabbit IgG antibody (GTx213110-01) was used to detect the primary antibody.



For full product information, images and publications, please visit our [website](http://www.genetex.com).