

Kinesin Heavy Chain antibody [KN-03]

Cat. No. GTX11883

Host	Mouse
Clonality	Monoclonal
Isotype	IgM
Applications	ICC/IF
Reactivity	Human, Mouse, Rat, Pig

Package
100 µg

Applications

Application Note

*Optimal dilutions/concentrations should be determined by the researcher.

Suggested dilution	Recommended dilution
ICC/IF	Assay dependent

Not tested in other applications.

Product Note

This antibody recognizes heavy chain of conventional kinesin associated with vesicles and with lower affinity with denaturated molecule. Epitope mapping (by limited proteolysis of partially purified porcine kinesin) followed by immunoblotting has revealed that antibodies KN-01, KN-02 and KN-03 react with different sets of fragments The antibody KN-03 well recognizes kinesin bound to taxol-stabilized microtubules.

Properties

Form	Liquid
Buffer	TBS
Preservative	15mM Sodium azide
Storage	Store as concentrated solution. Centrifuge briefly prior to opening vial. Store at 4°C. DO NOT FREEZE.
Concentration	1 mg/ml (Please refer to the vial label for the specific concentration.)
Immunogen	Enriched fraction of porcine brain kinesin.
Purification	Purified by precipitation and chromatography
Conjugation	Unconjugated

Note

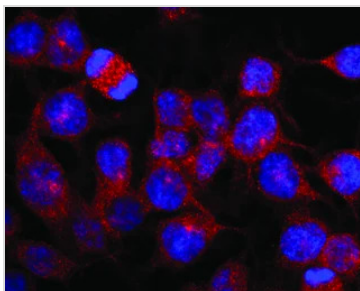
For laboratory research use only. Not for any clinical, therapeutic, or diagnostic use in humans or animals. Not for animal or human consumption.

Purchasers shall not, and agree not to enable third parties to, analyze, copy, reverse engineer or otherwise attempt to determine the structure or sequence of the product.



For full product information, images and publications, please visit our [website](#).

DATA IMAGES



GTX11883 ICC/IF Image

ICC/IF analysis of RBL-2H3 cells using GTX11883 Kinesin Heavy Chain antibody [KN-03].

Red : Primary antibody

Blue : DAPI



For full product information, images and publications, please visit our [website](#).