

RIPX antibody [N1C1]

Cat. No. GTX118968

Host	Rabbit
Clonality	Polyclonal
Isotype	IgG
Applications	WB, IHC-P
Reactivity	Human, Mouse

Package
100 µl, 25 µl

Applications

Application Note

*Optimal dilutions/concentrations should be determined by the researcher.

Suggested dilution	Recommended dilution
WB	1:500-1:3000
IHC-P	1:100-1:1000

Not tested in other applications.

Calculated MW 53 kDa. ([Note](#))

Properties

Form Liquid

Buffer PBS, 1% BSA, 20% Glycerol

Preservative 0.01% Thimerosal

Storage Store as concentrated solution. Centrifuge briefly prior to opening vial. For short-term storage (1-2 weeks), store at 4°C. For long-term storage, aliquot and store at -20°C or below. Avoid multiple freeze-thaw cycles.

Concentration 1 mg/ml (Please refer to the vial label for the specific concentration.)

Immunogen Recombinant protein encompassing a sequence within the center region of human RIPX. The exact sequence is proprietary.

Purification Purified by antigen-affinity chromatography.

Conjugation Unconjugated

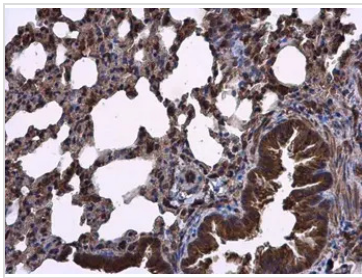
Note For laboratory research use only. Not for any clinical, therapeutic, or diagnostic use in humans or animals. Not for animal or human consumption.

Purchasers shall not, and agree not to enable third parties to, analyze, copy, reverse engineer or otherwise attempt to determine the structure or sequence of the product.



For full product information, images and publications, please visit our [website](#).

DATA IMAGES



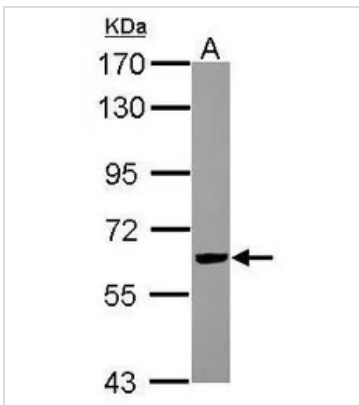
GTX118968 IHC-P Image

RIPX antibody [N1C1] detects RIPX protein at cytoplasm in mouse lung by immunohistochemical analysis.

Sample: Paraffin-embedded mouse lung.

RIPX antibody [N1C1] (GTX118968) diluted at 1:500.

Antigen Retrieval: Citrate buffer, pH 6.0, 15 min



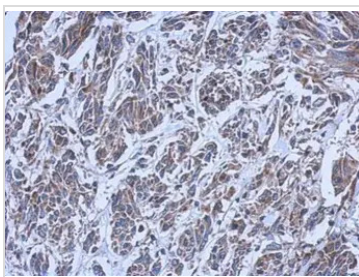
GTX118968 WB Image

Sample (30 ug of whole cell lysate)

A: IMR32

7.5% SDS PAGE

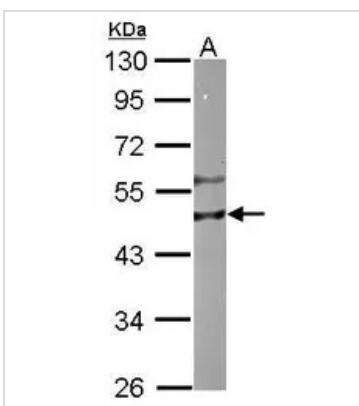
GTX118968 diluted at 1:3000



GTX118968 IHC-P Image

Immunohistochemical analysis of paraffin-embedded U251 xenograft, using RIPX(GTX118968) antibody at 1:500 dilution.

Antigen Retrieval: Trilogy™ (EDTA based, pH 8.0) buffer, 15min



GTX118968 WB Image

Sample (50 ug of whole cell lysate)

A: mouse brain

10% SDS PAGE

GTX118968 diluted at 1:1000



For full product information, images and publications, please visit our [website](#).