

AKT (phospho Ser473) antibody [104A282]

Cat. No. GTX11901

Host	Mouse
Clonality	Monoclonal
Isotype	IgG1
Applications	WB, ICC/IF, IHC-P
Reactivity	Human, Mouse, Zebrafish, Chicken

References (9)

Package

50 µg

Applications

Application Note

*Optimal dilutions/concentrations should be determined by the researcher.

Suggested dilution	Recommended dilution
WB	Assay dependent
ICC/IF	Assay dependent
IHC-P	1:200 - 1:250

Not tested in other applications.

Calculated MW 56 kDa. ([Note](#))

Properties

Form	Liquid
Buffer	PBS
Preservative	0.05% Sodium azide
Storage	Store as concentrated solution. Centrifuge briefly prior to opening vial. For short-term storage (1-2 weeks), store at 4°C. For long-term storage, aliquot and store at -20°C or below. Avoid multiple freeze-thaw cycles.
Concentration	1 mg/ml (Please refer to the vial label for the specific concentration.)
Immunogen	This monoclonal antibody was raised against a synthetic peptide containing phosphorylated serines at amino acid residues 473 of human Akt1.
Purification	Protein G purified
Conjugation	Unconjugated

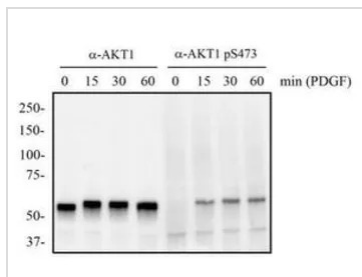
Note

For laboratory research use only. Not for any clinical, therapeutic, or diagnostic use in humans or animals. Not for animal or human consumption.

Purchasers shall not, and agree not to enable third parties to, analyze, copy, reverse engineer or otherwise attempt to determine the structure or sequence of the product.

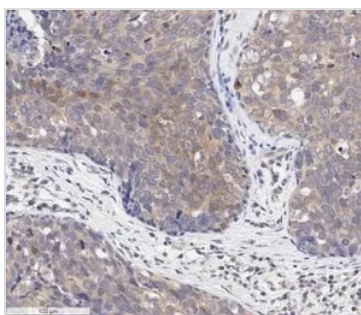


For full product information, images and publications, please visit our [website](#).

DATA IMAGES

GTK11901 WB Image

WB analysis of 3T3 cells treated with and without PDGF (50 ng/ml) using GTK11901 AKT (phospho Ser473) antibody [104A282] and AKT1 antibody.

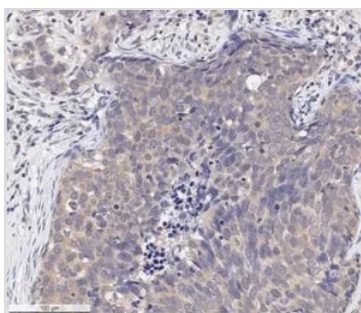
Dilution : 2 µg/ml


GTK11901 IHC-P Image

IHC-P analysis of human breast carcinoma tissue using GTK11901 AKT (phospho Ser473) antibody [104A282].

Dilution : 1:250

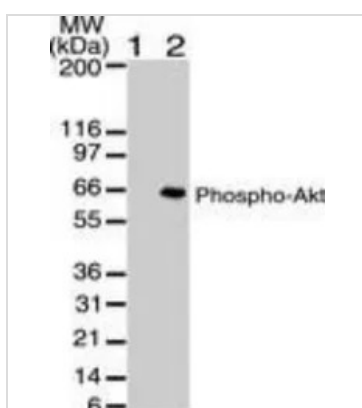
Antigen retrieval : Heat induced antigen retrieval (HIER) using 10mM sodium citrate buffer (pH 6.0)


GTK11901 IHC-P Image

IHC-P analysis of human breast carcinoma tissue using GTK11901 AKT (phospho Ser473) antibody [104A282].

Dilution : 1:250

Antigen retrieval : Heat induced antigen retrieval (HIER) using 10mM sodium citrate buffer (pH 6.0)


GTK11901 WB Image

WB analysis of untreated (lane 1) and PDGF treated (lane 2) NIH-3T3 lysate using GTK11901 AKT (phospho Ser473) antibody [104A282].

Dilution : 2 µg/ml



For full product information, images and publications, please visit our [website](https://www.genetex.com).