

MAB21L1 antibody

Cat. No. GTX119053

Host	Rabbit
Clonality	Polyclonal
Isotype	IgG
Applications	WB, IHC-P, IHC-Wm
Reactivity	Human, Mouse, Zebrafish

Package
100 µl, 25 µl

Applications

Application Note

*Optimal dilutions/concentrations should be determined by the researcher.

Suggested dilution	Recommended dilution
WB	1:500-1:3000
IHC-P	Assay dependent
IHC-Wm	Assay dependent

Not tested in other applications.

Calculated MW 41 kDa. ([Note](#))

Properties

Form	Liquid
Buffer	0.1M Tris, 0.1M Glycine, 20% Glycerol
Preservative	0.01% Thimerosal
Storage	Store as concentrated solution. Centrifuge briefly prior to opening vial. For short-term storage (1-2 weeks), store at 4°C. For long-term storage, aliquot and store at -20°C or below. Avoid multiple freeze-thaw cycles.
Concentration	0.89 mg/ml (Please refer to the vial label for the specific concentration.)
Immunogen	Recombinant protein encompassing a sequence within the center region of human MAB21L1. The exact sequence is proprietary.
Purification	Purified by antigen-affinity chromatography.
Conjugation	Unconjugated

Note

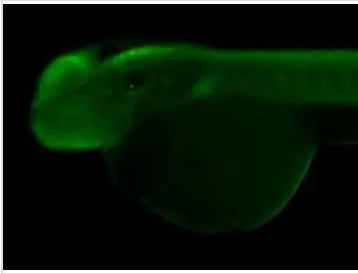
For laboratory research use only. Not for any clinical, therapeutic, or diagnostic use in humans or animals. Not for animal or human consumption.

Purchasers shall not, and agree not to enable third parties to, analyze, copy, reverse engineer or otherwise attempt to determine the structure or sequence of the product.



For full product information, images and publications, please visit our [website](#).

DATA IMAGES



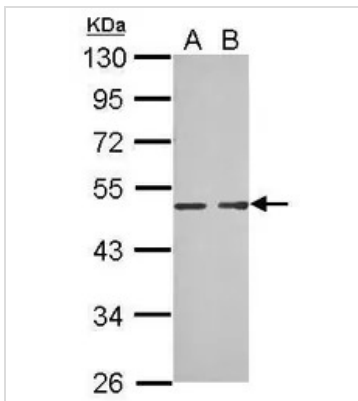
GTx119053 IHC-Wm Image

Immunohistochemical analysis (whole mount) of zebrafish embryo, using MAB21L1 antibody (GTx119053) at 1:200 dilution.



GTx119053 IHC-P Image

Immunohistochemical analysis of paraffin-embedded zebrafish tissue, using MAB21L1 antibody (GTx119053) at 1:300 dilution.



GTx119053 WB Image

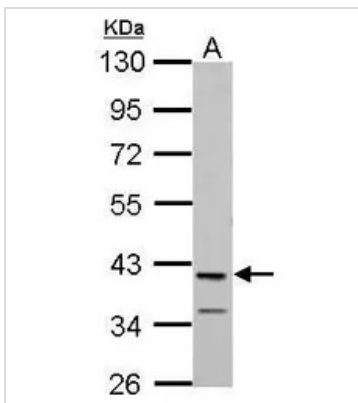
Sample (30 µg of whole cell lysate)

A: adult zebrafish

B: zebrafish eye

10% SDS PAGE

GTx119053 diluted at 1:1000



GTx119053 WB Image

Sample (30 ug of whole cell lysate)

A: NIH-3T3

10% SDS PAGE

GTx119053 diluted at 1:1000



For full product information, images and publications, please visit our [website](https://www.genetex.com).