

UBE3C antibody [N1N3]

Cat. No. GTX119102

| | |
|---------------------|--------------|
| Host | Rabbit |
| Clonality | Polyclonal |
| Isotype | IgG |
| Applications | WB, ICC/IF |
| Reactivity | Human, Mouse |

References (3)

Package

100 µl, 25 µl

Applications

Application Note

*Optimal dilutions/concentrations should be determined by the researcher.

| Suggested dilution | Recommended dilution |
|--------------------|----------------------|
| WB | 1:500-1:3000 |
| ICC/IF | 1:100-1:1000 |

Not tested in other applications.

Calculated MW 124 kDa. ([Note](#))

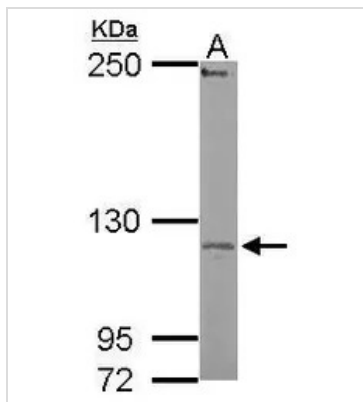
Properties

| | |
|----------------------|--|
| Form | Liquid |
| Buffer | 0.1M Tris, 0.1M Glycine, 20% Glycerol |
| Preservative | 0.01% Thimerosal |
| Storage | Store as concentrated solution. Centrifuge briefly prior to opening vial. For short-term storage (1-2 weeks), store at 4°C. For long-term storage, aliquot and store at -20°C or below. Avoid multiple freeze-thaw cycles. |
| Concentration | 1 mg/ml (Please refer to the vial label for the specific concentration.) |
| Immunogen | Recombinant protein encompassing a sequence within the center region of human UBE3C. The exact sequence is proprietary. |
| Purification | Purified by antigen-affinity chromatography. |
| Conjugation | Unconjugated |
| Note | For laboratory research use only. Not for any clinical, therapeutic, or diagnostic use in humans or animals. Not for animal or human consumption. Purchasers shall not, and agree not to enable third parties to, analyze, copy, reverse engineer or otherwise attempt to determine the structure or sequence of the product. |



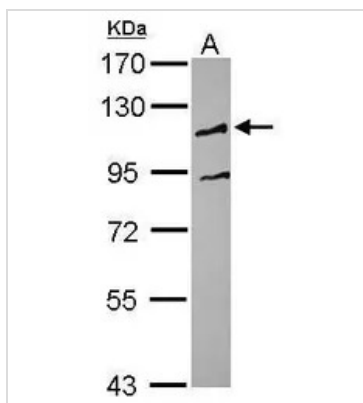
For full product information, images and publications, please visit our [website](#).

DATA IMAGES



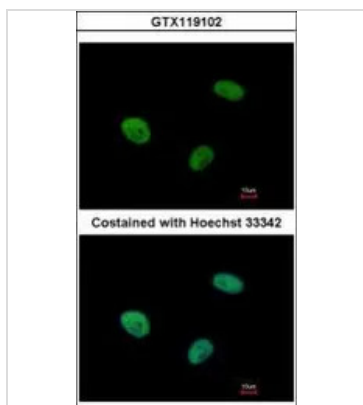
GTX119102 WB Image

Sample (50 ug of whole cell lysate)
 A: mouse brain
 5% SDS PAGE
 GTX119102 diluted at 1:500



GTX119102 WB Image

Sample (30 ug of whole cell lysate)
 A: HepG2
 7.5% SDS PAGE
 GTX119102 diluted at 1:1000



GTX119102 ICC/IF Image

Immunofluorescence analysis of paraformaldehyde-fixed HeLa, using UBE3C(GTX119102) antibody at 1:500 dilution.



For full product information, images and publications, please visit our [website](#).