

## ZNF598 antibody [N1N3]

Cat. No. GTX119245

Host	Rabbit
Clonality	Polyclonal
Isotype	IgG
Application	WB, ICC/IF, IHC-P, IHC-Fr
Reactivity	Human, Mouse

Reference ( 8 )

Package

100 µl, 25 µl

## APPLICATION

## Application Note

\*Optimal dilutions/concentrations should be determined by the researcher.

Suggested dilution	Recommended dilution
WB	1:500-1:3000
ICC/IF	1:100-1:1000
IHC-P	1:100-1:1000
IHC-Fr	Assay dependent

Not tested in other applications.

**Calculated MW** 99 kDa. ( [Note](#) )

**Product Note** Knockdown/Knockout validation was supported by references (PMID:28065601)

## PROPERTIES

Form	Liquid
Buffer	PBS, 1% BSA, 20% Glycerol
Preservative	0.025% ProClin 300
Storage	Store as concentrated solution. Centrifuge briefly prior to opening vial. For short-term storage (1-2 weeks), store at 4°C. For long-term storage, aliquot and store at -20°C or below. Avoid multiple freeze-thaw cycles.
Concentration	0.29 mg/ml (Please refer to the vial label for the specific concentration.)
Immunogen	Recombinant protein encompassing a sequence within the center region of human ZNF598. The exact sequence is proprietary.
Purification	Purified by antigen-affinity chromatography.
Conjugation	Unconjugated



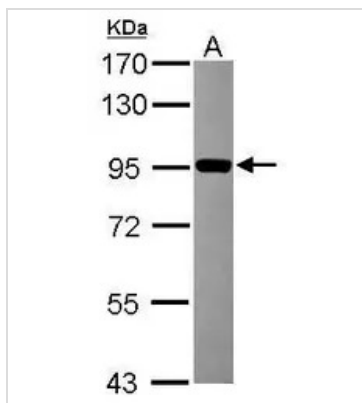
For full product information, images and publications, please visit our [website](#).

For laboratory research use only. Not for any clinical, therapeutic, or diagnostic use in humans or animals. Not for animal or human consumption.

## Note

Purchasers shall not, and agree not to enable third parties to, analyze, copy, reverse engineer or otherwise attempt to determine the structure or sequence of the product.

## DATA IMAGES



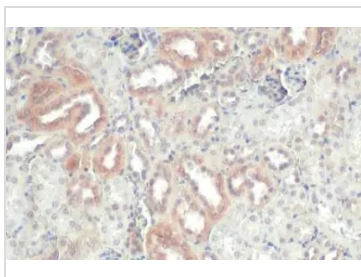
### GTX119245 WB Image

Sample (30 ug of whole cell lysate)

A: Raji

7.5% SDS PAGE

GTX119245 diluted at 1:1000



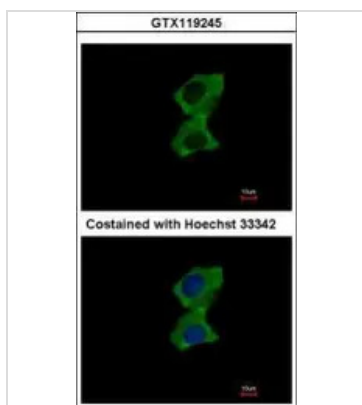
### GTX119245 IHC-P Image

ZNF598 antibody [N1N3] detects ZNF598 protein at cytoplasm by immunohistochemical analysis.

Sample: Paraffin-embedded mouse pancreas.

ZNF598 stained by ZNF598 antibody [N1N3] (GTX119245) diluted at 1:500.

Antigen Retrieval: Citrate buffer, pH 6.0, 15 min



### GTX119245 ICC/IF Image

Immunofluorescence analysis of methanol-fixed A431, using ZNF598(GTX119245) antibody at 1:500 dilution.



For full product information, images and publications, please visit our [website](#).