

D4 GDI (cleaved specific) antibody [97A1015]

Cat. No. GTX11927

Host	Mouse
Clonality	Monoclonal
Isotype	IgG2b
Application	WB, IHC-P, FACS, IP
Reactivity	Human, Mouse

Package

50 µg

APPLICATION

Application Note

*Optimal dilutions/concentrations should be determined by the researcher.

Suggested dilution	Recommended dilution
WB	2 µg/ml
IHC-P	1:10 - 1:500
FACS	0.5 - 1 µg / 10 ⁶ cells
IP	1 - 2 µg/ml

Not tested in other applications.

Calculated MW 23 kDa. ([Note](#))

PROPERTIES

Form	Liquid
Buffer	PBS, 0.05% BSA
Preservative	0.05% Sodium azide
Storage	Store as concentrated solution. Centrifuge briefly prior to opening vial. For short-term storage (1-2 weeks), store at 4°C. For long-term storage, aliquot and store at -20°C or below. Avoid multiple freeze-thaw cycles.
Concentration	0.5 mg/ml (Please refer to the vial label for the specific concentration.)
Immunogen	A synthetic peptide corresponding to the region of the Fas-induced cleavage site of human D4-GDI/RhoGDI2 was used as the immunogen.
Purification	Protein G purified
Conjugation	Unconjugated

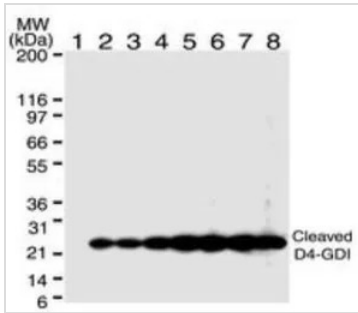


For full product information, images and publications, please visit our [website](#).

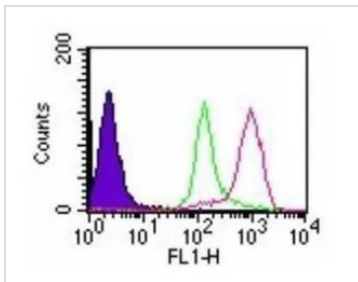
For laboratory research use only. Not for any clinical, therapeutic, or diagnostic use in humans or animals. Not for animal or human consumption.

Note

Purchasers shall not, and agree not to enable third parties to, analyze, copy, reverse engineer or otherwise attempt to determine the structure or sequence of the product.

DATA IMAGES

GTX11927 WB Image

WB analysis of HL-60 cells treated with 10 ng/ml anti-FAS mab (clone DX2) using GTX11927 D4 GDI (cleavage specific) antibody [97A1015].


GTX11927 FACS Image

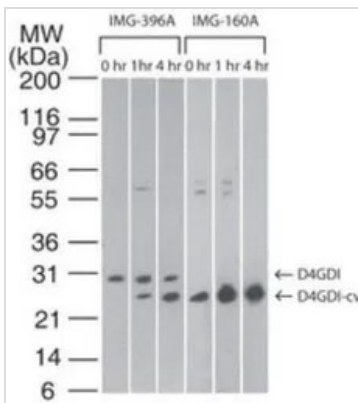
FACS (Intracellular staining) analysis of camptothecin-treated HL-60 cells using GTX11927 D4 GDI (cleavage specific) antibody [97A1015].

Red : Primary antibody

Green : isotype control

Shaded histogram : cell only

Antibody amount : 0.5 μ g


GTX11927 WB Image

WB analysis of 2 μ M staurosporine treated Jurkat cell lysate using GTX11927 D4 GDI (cleavage specific) antibody [97A1015] (lane 4~6) or D4 GDI antibody (lane 1~3) as a control .

Dilution : 1 μ g/ml



For full product information, images and publications, please visit our [website](https://www.genetex.com).