

DAP5 antibody [39C534.1]

Cat. No. GTX11929

Host	Mouse
Clonality	Monoclonal
Isotype	IgG1
Applications	WB, FCM
Reactivity	Human, Mouse, Hamster

Package
50 µg

Applications

Application Note

*Optimal dilutions/concentrations should be determined by the researcher.

Suggested dilution	Recommended dilution
WB	1 - 2 µg/ml
FCM	1 µg / 10 ⁶ cells

Note : Permeabilization step is needed.

Not tested in other applications.

Calculated MW 102 kDa. ([Note](#))

Properties

Form	Liquid
Buffer	PBS, 0.2% Gelatin
Preservative	0.05% Sodium azide
Storage	Store as concentrated solution. Centrifuge briefly prior to opening vial. For short-term storage (1-2 weeks), store at 4°C. For long-term storage, aliquot and store at -20°C or below. Avoid multiple freeze-thaw cycles.
Concentration	0.5 mg/ml (Please refer to the vial label for the specific concentration.)
Immunogen	The antibody was raised against two synthetic peptides corresponding to amino acids 796-812 of human DAP-5 protein.
Purification	Protein G purified
Conjugation	Unconjugated

Note

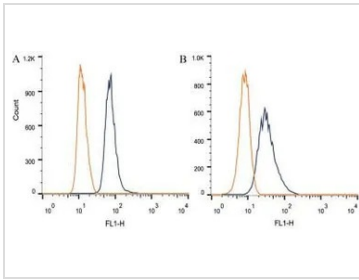
For laboratory research use only. Not for any clinical, therapeutic, or diagnostic use in humans or animals. Not for animal or human consumption.

Purchasers shall not, and agree not to enable third parties to, analyze, copy, reverse engineer or otherwise attempt to determine the structure or sequence of the product.



For full product information, images and publications, please visit our [website](#).

DATA IMAGES



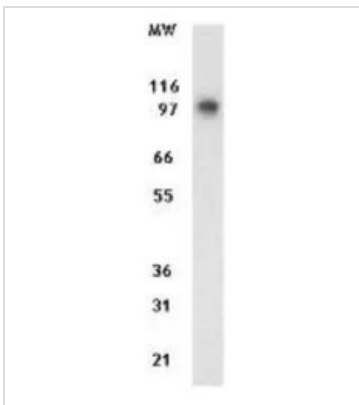
GTX11929 FCM Image

FACS (Intracellular staining) analysis of CHO (A) and HEK293 (B) cells using GTX11929 DAP5 antibody [39C534.1].

Blue : Primary antibody

Orange : isotype control

Dilution : 1 µg/1 x 10⁶ cells



GTX11929 WB Image

WB analysis of Jurkat cell lysate using GTX11929 DAP5 antibody [39C534.1].

Loading : 15µg



For full product information, images and publications, please visit our [website](#).