

DR4 antibody [32A1380]

Cat. No. GTX11931

Host	Mouse
Clonality	Monoclonal
Isotype	IgG1
Applications	WB, ICC/IF, FCM, MS
Reactivity	Human

Package

50 µg

Applications

Application Note

*Optimal dilutions/concentrations should be determined by the researcher.

Suggested dilution	Recommended dilution
WB	2 - 4 µg/ml
ICC/IF	Assay dependent
FCM	1:20 - 1:2000
MS	Assay dependent

Not tested in other applications.

Calculated MW 50 kDa. ([Note](#))

Properties

Form	Liquid
Buffer	PBS
Preservative	0.05% Sodium azide
Storage	Store as concentrated solution. Centrifuge briefly prior to opening vial. For short-term storage (1-2 weeks), store at 4°C. For long-term storage, aliquot and store at -20°C or below. Avoid multiple freeze-thaw cycles.
Concentration	1 mg/ml (Please refer to the vial label for the specific concentration.)
Immunogen	This monoclonal antibody was raised against a peptide corresponding to amino acid 2 to 21 of human DR4.
Purification	Protein G purified
Conjugation	Unconjugated

Note

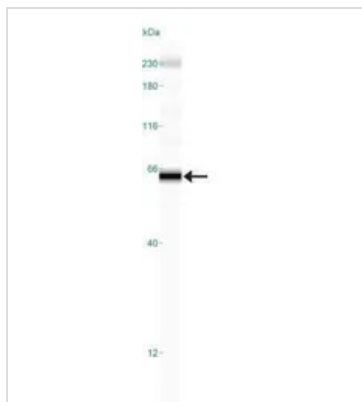
For laboratory research use only. Not for any clinical, therapeutic, or diagnostic use in humans or animals. Not for animal or human consumption.

Purchasers shall not, and agree not to enable third parties to, analyze, copy, reverse engineer or otherwise attempt to determine the structure or sequence of the product.



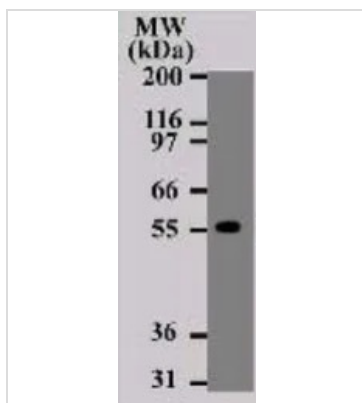
For full product information, images and publications, please visit our [website](#).

DATA IMAGES



GTX11931 WB Image

WB analysis of Daudi cell lysate using GTX11931 DR4 antibody [32A1380].



GTX11931 WB Image

WB analysis of Daudi cell lysate using GTX11931 DR4 antibody [32A1380].

Dilution : 2 µg/ml



For full product information, images and publications, please visit our [website](#).