

AAMP antibody

Cat. No. GTX119410

Host	Rabbit
Clonality	Polyclonal
Isotype	IgG
Applications	WB, IHC-P
Reactivity	Human, Mouse, Rat

References (1)

Package

100 µl, 25 µl

Applications

Application Note

*Optimal dilutions/concentrations should be determined by the researcher.

Suggested dilution	Recommended dilution
WB	1:500-1:3000
IHC-P	1:100-1:1000

Not tested in other applications.

Calculated MW 47 kDa. ([Note](#))

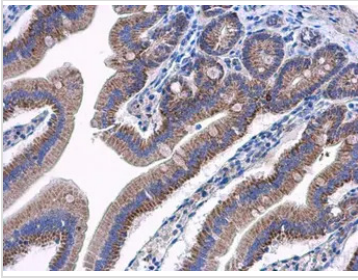
Properties

Form	Liquid
Buffer	0.1M Tris, 0.1M Glycine, 20% Glycerol
Preservative	0.01% Thimerosal
Storage	Store as concentrated solution. Centrifuge briefly prior to opening vial. For short-term storage (1-2 weeks), store at 4°C. For long-term storage, aliquot and store at -20°C or below. Avoid multiple freeze-thaw cycles.
Concentration	1 mg/ml (Please refer to the vial label for the specific concentration.)
Immunogen	Recombinant protein encompassing a sequence within the center region of human AAMP. The exact sequence is proprietary.
Purification	Purified by antigen-affinity chromatography.
Conjugation	Unconjugated
Note	For laboratory research use only. Not for any clinical, therapeutic, or diagnostic use in humans or animals. Not for animal or human consumption. Purchasers shall not, and agree not to enable third parties to, analyze, copy, reverse engineer or otherwise attempt to determine the structure or sequence of the product.



For full product information, images and publications, please visit our [website](#).

DATA IMAGES

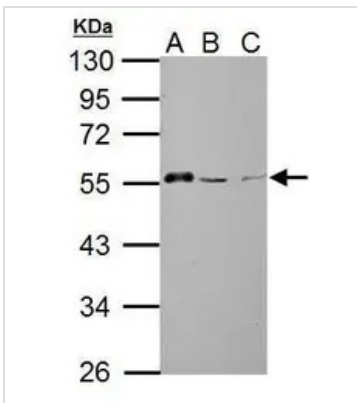
**GTx119410 IHC-P Image**

AAMP antibody detects AAMP protein at cytoplasm in mouse duodenum by immunohistochemical analysis.

Sample: Paraffin-embedded mouse duodenum.

AAMP antibody (GTx119410) diluted at 1:500.

Antigen Retrieval: Citrate buffer, pH 6.0, 15 min

**GTx119410 WB Image**

AAMP antibody detects AAMP protein by Western blot analysis.

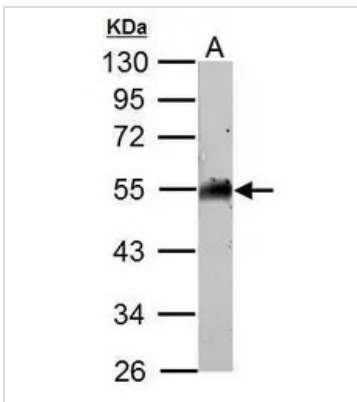
A. 30 µg 293T whole cell lysate/extract

B. 30 µg HepG2 whole cell lysate/extract

C. 30 µg A375 whole cell lysate/extract

10 % SDS-PAGE

AAMP antibody (GTx119410) dilution: 1:1000

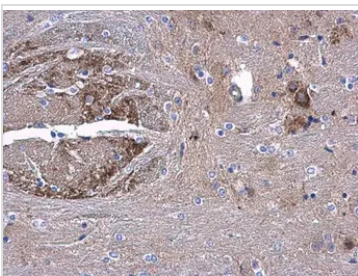
**GTx119410 WB Image**

AAMP antibody detects AAMP protein by Western blot analysis.

A. 50 µg mouse brain lysate/extract

10 % SDS-PAGE

AAMP antibody (GTx119410) dilution: 1:1000

**GTx119410 IHC-P Image**

AAMP antibody detects AAMP protein at cytoplasm in mouse middle brain by immunohistochemical analysis.

Sample: Paraffin-embedded mouse middle brain.

AAMP antibody (GTx119410) diluted at 1:500.

Antigen Retrieval: Citrate buffer, pH 6.0, 15 min



For full product information, images and publications, please visit our [website](http://www.genetex.com).