

TREM1 antibody

Cat. No. GTX11944

Host	Rabbit
Clonality	Polyclonal
Isotype	IgG
Applications	WB, IHC-P
Reactivity	Mouse, Rat

Package
100 µg

Applications

Application Note

*Optimal dilutions/concentrations should be determined by the researcher.

Suggested dilution	Recommended dilution
WB	0.1-0.5µg/ml
IHC-P	0.5-1µg/ml

Not tested in other applications.

Calculated MW 25 kDa. ([Note](#))

Properties

Form	Liquid
Buffer	0.1% Na ₂ HPO ₄ , 0.45% NaCl, 2.5% BSA
Preservative	0.025% Thimerosal, 0.025% Sodium azide
Storage	Store as concentrated solution. Centrifuge briefly prior to opening vial. For short-term storage (1-2 weeks), store at 4°C. For long-term storage, aliquot and store at -20°C or below. Avoid multiple freeze-thaw cycles.
Concentration	500 µg/ml (Please refer to the vial label for the specific concentration.)
Immunogen	A synthetic peptide corresponding to a sequence in the middle of mouse TREM1(74-90aa FTRPSEVHMGKFTLKHD).
Purification	Purified by antigen-affinity chromatography
Conjugation	Unconjugated

Note

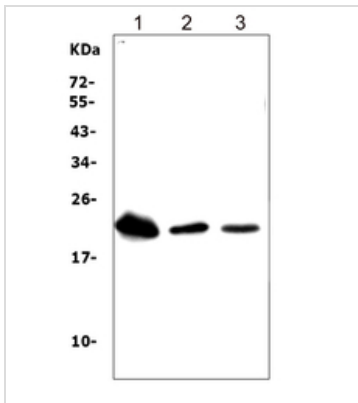
For laboratory research use only. Not for any clinical, therapeutic, or diagnostic use in humans or animals. Not for animal or human consumption.

Purchasers shall not, and agree not to enable third parties to, analyze, copy, reverse engineer or otherwise attempt to determine the structure or sequence of the product.



For full product information, images and publications, please visit our [website](#).

DATA IMAGES

**GTX11944 WB Image**

WB analysis of various samples using GTX11944 TREM1 antibody.

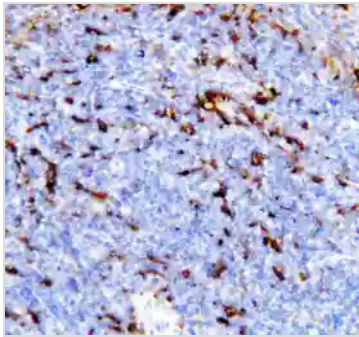
Lane 1 : rat liver tissue lysates

Lane 2 : mouse liver tissue lysates

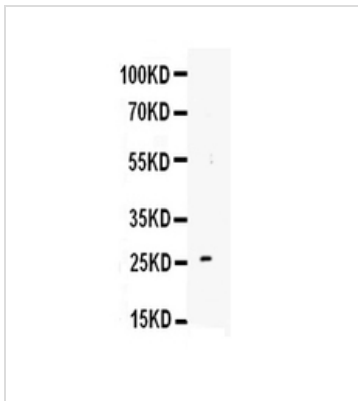
Lane 3 : mouse spleen tissue lysates

Dilution : 0.5 µg/mL

Loading : 50µg of sample under reducing conditions

**GTX11944 IHC-P Image**

IHC-P analysis of mouse spleen tissue using GTX11944 TREM1 antibody.

**GTX11944 WB Image**

WB analysis of 1ng recombinant mouse TREM1 protein using GTX11944 TREM1 antibody.



For full product information, images and publications, please visit our [website](#).