

Glutathione S-transferase kappa 1 antibody [N1C2]

Cat. No. GTX119447

Host	Rabbit
Clonality	Polyclonal
Isotype	IgG
Application	WB, ICC/IF, IHC-P
Reactivity	Human

Package
100 µl, 25 µl

APPLICATION

Application Note

*Optimal dilutions/concentrations should be determined by the researcher.

Suggested dilution	Recommended dilution
WB	1:500-1:3000
ICC/IF	1:100-1:1000
IHC-P	1:100-1:1000

Not tested in other applications.

Calculated MW 25 kDa. ([Note](#))

PROPERTIES

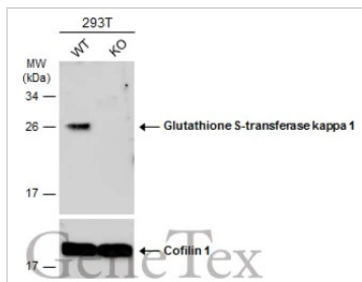
Form	Liquid
Buffer	0.1M Tris, 0.1M Glycine, 20% Glycerol
Preservative	0.01% Thimerosal
Storage	Store as concentrated solution. Centrifuge briefly prior to opening vial. For short-term storage (1-2 weeks), store at 4°C. For long-term storage, aliquot and store at -20°C or below. Avoid multiple freeze-thaw cycles.
Concentration	0.85 mg/ml (Please refer to the vial label for the specific concentration.)
Immunogen	Recombinant protein encompassing a sequence within the center region of human Glutathione S-transferase kappa 1. The exact sequence is proprietary.
Purification	Purified by antigen-affinity chromatography.
Conjugation	Unconjugated

Note For laboratory research use only. Not for any clinical, therapeutic, or diagnostic use in humans or animals. Not for animal or human consumption.

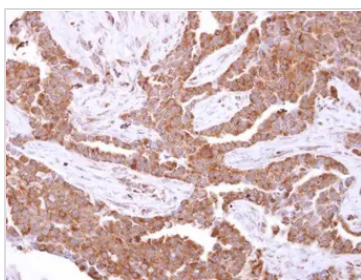
Purchasers shall not, and agree not to enable third parties to, analyze, copy, reverse engineer or otherwise attempt to determine the structure or sequence of the product.



For full product information, images and publications, please visit our [website](#).

DATA IMAGES

GTX119447 WB Image

Wild-type (WT) and Glutathione S-transferase kappa 1 knockout (KO) 293T cell extracts (30 µg) were separated by 12% SDS-PAGE, and the membrane was blotted with Glutathione S-transferase kappa 1 antibody (GTX119447) diluted at 1:1000. The HRP-conjugated anti-rabbit IgG antibody (GTX213110-01) was used to detect the primary antibody.

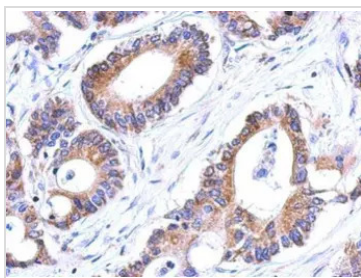

GTX119447 IHC-P Image

Glutathione S-transferase kappa 1 antibody [N1C2] detects Glutathione S-transferase kappa 1 protein at peroxisome on human lung carcinoma by immunohistochemical analysis.

Sample: Paraffin-embedded lung carcinoma.

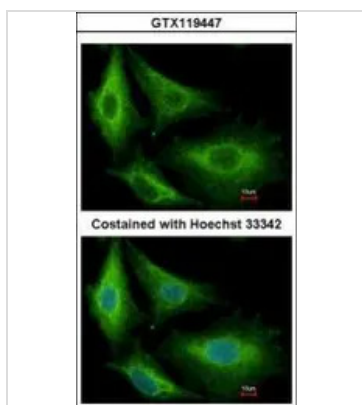
Glutathione S-transferase kappa 1 antibo

Antigen Retrieval: Trilogy™ (EDTA based, pH 8.0) buffer, 15min


GTX119447 IHC-P Image

Immunohistochemical analysis of paraffin-embedded human gastric cancer, using Glutathione S-transferase kappa 1 (GTX119447) antibody at 1:500 dilution.

Antigen Retrieval: Trilogy™ (EDTA based, pH 8.0) buffer, 15min


GTX119447 ICC/IF Image

Immunofluorescence analysis of methanol-fixed A549, using Glutathione S-transferase kappa 1 (GTX119447) antibody at 1:500 dilution.



For full product information, images and publications, please visit our [website](https://www.genetex.com).