

INDOL1 antibody

Cat. No. GTX11947

Host	Rabbit
Clonality	Polyclonal
Isotype	IgG
Applications	WB, FCM
Reactivity	Human

References (1)

Package

100 µg

Applications

Application Note

*Optimal dilutions/concentrations should be determined by the researcher.

Suggested dilution	Recommended dilution
WB	0.1-0.5µg/ml
FCM	1-3µg/1x10 ⁶ cells

Not tested in other applications.

Calculated MW 47.08 kDa. ([Note](#))

Properties

Form	Liquid
Buffer	0.1% Na ₂ HPO ₄ , 0.45% NaCl, 2.5% BSA
Preservative	0.025% Thimerosal, 0.025% Sodium azide
Storage	Store as concentrated solution. Centrifuge briefly prior to opening vial. For short-term storage (1-2 weeks), store at 4°C. For long-term storage, aliquot and store at -20°C or below. Avoid multiple freeze-thaw cycles.
Concentration	500 µg/ml (Please refer to the vial label for the specific concentration.)
Immunogen	A synthetic peptide corresponding to a sequence at the N-terminus of human INDOL1(1-20aa MLHFHYDTSNKIMEPHRPN).
Purification	Purified by antigen-affinity chromatography
Conjugation	Unconjugated

Note

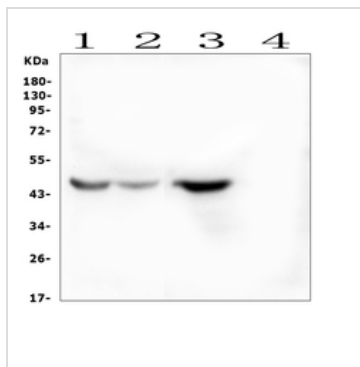
For laboratory research use only. Not for any clinical, therapeutic, or diagnostic use in humans or animals. Not for animal or human consumption.

Purchasers shall not, and agree not to enable third parties to, analyze, copy, reverse engineer or otherwise attempt to determine the structure or sequence of the product.



For full product information, images and publications, please visit our [website](#).

DATA IMAGES



GTx11947 WB Image

WB analysis of various samples using GTx11947 INDOL1 antibody.

Lane 1 : human A549 whole cell lysates (positive control)

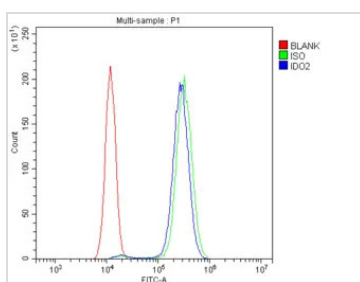
Lane 2 : human placenta tissue lysates (positive control)

Lane 3 : human Caco-2 whole cell lysates (positive control)

Lane 4 : human PC-3 whole cell lysates (negative control)

Dilution : 0.5 µg/mL

Loading : 50µg of sample under reducing conditions



GTx11947 FCM Image

FACS analysis of SiHa cells using GTx11947 INDOL1 antibody.

Blue : Primary antibody

Green : Isotype control

Red : Cell only control

Antibody amount : 1µg/1x10⁶ cells for 30 min at 20°C



For full product information, images and publications, please visit our [website](#).