

## MRPL40 antibody

**Cat. No. GTX119564**

<b>Host</b>	Rabbit
<b>Clonality</b>	Polyclonal
<b>Isotype</b>	IgG
<b>Applications</b>	WB
<b>Reactivity</b>	Human, Rat

**Package**  
100 µl, 25 µl

## Applications

**Application Note**

\*Optimal dilutions/concentrations should be determined by the researcher.

Suggested dilution	Recommended dilution
WB	1:500-1:3000

Not tested in other applications.

**Calculated MW** 24 kDa. ([Note](#))

## Properties

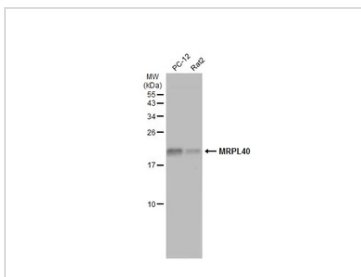
<b>Form</b>	Liquid
<b>Buffer</b>	0.1M Tris, 0.1M Glycine, 20% Glycerol
<b>Preservative</b>	0.01% Thimerosal
<b>Storage</b>	Store as concentrated solution. Centrifuge briefly prior to opening vial. For short-term storage (1-2 weeks), store at 4°C. For long-term storage, aliquot and store at -20°C or below. Avoid multiple freeze-thaw cycles.
<b>Concentration</b>	0.75 mg/ml (Please refer to the vial label for the specific concentration.)
<b>Immunogen</b>	Recombinant protein encompassing a sequence within the center region of human MRPL40. The exact sequence is proprietary.
<b>Purification</b>	Purified by antigen-affinity chromatography.
<b>Conjugation</b>	Unconjugated

**Note** For laboratory research use only. Not for any clinical, therapeutic, or diagnostic use in humans or animals. Not for animal or human consumption.

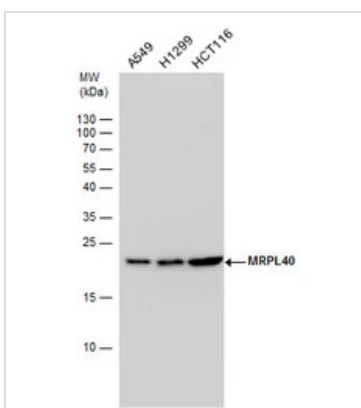
Purchasers shall not, and agree not to enable third parties to, analyze, copy, reverse engineer or otherwise attempt to determine the structure or sequence of the product.



For full product information, images and publications, please visit our [website](#).

**DATA IMAGES**

**GTX119564 WB Image**

Various whole cell extracts (30  $\mu$ g) were separated by 15% SDS-PAGE, and the membrane was blotted with MRPL40 antibody (GTX119564) diluted at 1:500. The HRP-conjugated anti-rabbit IgG antibody (GTX213110-01) was used to detect the primary antibody.


**GTX119564 WB Image**

MRPL40 antibody detects MRPL40 protein by western blot analysis. Various whole cell extracts (30  $\mu$ g) were separated by 15% SDS-PAGE, and the membrane was blotted with MRPL40 antibody (GTX119564) diluted by 1:1000.



For full product information, images and publications, please visit our [website](#).