

Pyruvate Dehydrogenase E1 beta subunit antibody

Cat. No. GTX119625

Host	Rabbit
Clonality	Polyclonal
Isotype	IgG
Applications	WB, ICC/IF, IHC-P
Reactivity	Human, Mouse

References (4)

Package

100 µl, 25 µl

Applications

Application Note

*Optimal dilutions/concentrations should be determined by the researcher.

Suggested dilution	Recommended dilution
WB	1:500-1:3000
ICC/IF	1:100-1:1000
IHC-P	1:100-1:1000

Not tested in other applications.

Calculated MW 39 kDa. ([Note](#))

Properties

Form	Liquid
Buffer	PBS, 1% BSA, 20% Glycerol
Preservative	0.01% Thimerosal
Storage	Store as concentrated solution. Centrifuge briefly prior to opening vial. For short-term storage (1-2 weeks), store at 4°C. For long-term storage, aliquot and store at -20°C or below. Avoid multiple freeze-thaw cycles.
Concentration	1.03 mg/ml (Please refer to the vial label for the specific concentration.)
Immunogen	Recombinant protein encompassing a sequence within the center region of human Pyruvate Dehydrogenase E1 beta subunit. The exact sequence is proprietary.
Purification	Purified by antigen-affinity chromatography.
Conjugation	Unconjugated

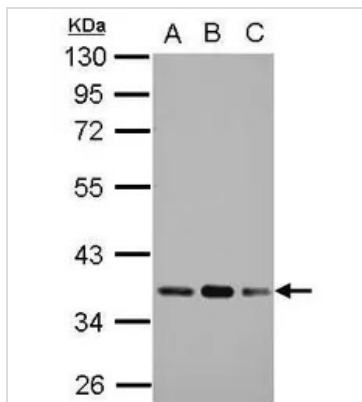
Note

For laboratory research use only. Not for any clinical, therapeutic, or diagnostic use in humans or animals. Not for animal or human consumption.

Purchasers shall not, and agree not to enable third parties to, analyze, copy, reverse engineer or otherwise attempt to determine the structure or sequence of the product.



For full product information, images and publications, please visit our [website](#).

DATA IMAGES

GTx119625 WB Image

Sample (30 ug of whole cell lysate)

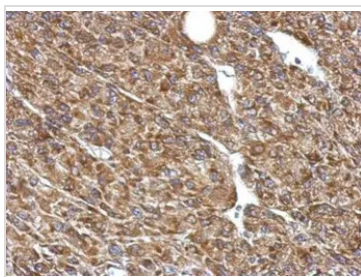
A: A549

B: H1299

C: HCT116

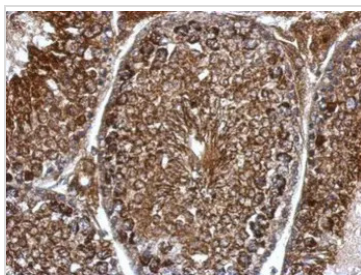
10% SDS PAGE

GTx119625 diluted at 1:1000


GTx119625 IHC-P Image

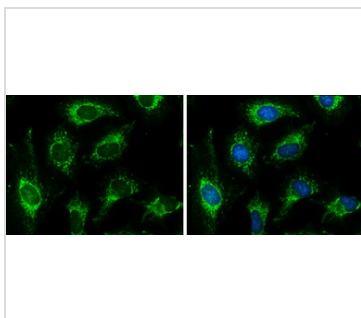
Immunohistochemical analysis of paraffin-embedded U87 xenograft, using Pyruvate Dehydrogenase E1 beta subunit(GTx119625) antibody at 1:500 dilution.

Antigen Retrieval: Trilogy™ (EDTA based, pH 8.0) buffer, 15min


GTx119625 IHC-P Image

Immunohistochemical analysis of paraffin-embedded mouse testis, using Pyruvate Dehydrogenase E1 beta subunit(GTx119625) antibody at 1:500 dilution.

Antigen Retrieval: Trilogy™ (EDTA based, pH 8.0) buffer, 15min


GTx119625 ICC/IF Image

Pyruvate Dehydrogenase E1 beta subunit antibody detects Pyruvate Dehydrogenase E1 beta subunit protein at mitochondria by immunofluorescent analysis.

Sample: HeLa cells were fixed in ice-cold MeOH for 5 min.

Green: Pyruvate Dehydrogenase E1 beta subunit protein stained by Pyruvate Dehydrogenase E1 beta subunit antibody (GTx119625) diluted at 1:500.

Blue: Hoechst 33342 staining.



For full product information, images and publications, please visit our [website](http://www.genetex.com).