

Wdr62 antibody

Cat. No. GTX119724

Host	Rabbit
Clonality	Polyclonal
Isotype	IgG
Applications	WB, ICC/IF, IHC-P, IHC-Fr
Reactivity	Mouse, Rat

References (1)

Package

100 µl, 25 µl

Applications

Application Note

*Optimal dilutions/concentrations should be determined by the researcher.

Suggested dilution	Recommended dilution
WB	1:500-1:3000
ICC/IF	1:100-1:1000
IHC-P	1:100-1:1000
IHC-Fr	1:100-1:1000

Not tested in other applications.

Properties

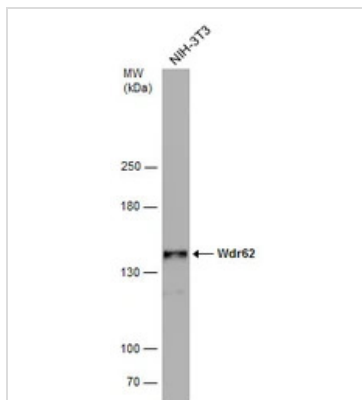
Form	Liquid
Buffer	PBS, 1% BSA, 20% Glycerol
Preservative	0.01% Thimerosal
Storage	Store as concentrated solution. Centrifuge briefly prior to opening vial. For short-term storage (1-2 weeks), store at 4°C. For long-term storage, aliquot and store at -20°C or below. Avoid multiple freeze-thaw cycles.
Concentration	1 mg/ml (Please refer to the vial label for the specific concentration.)
Immunogen	Carrier-protein conjugated synthetic peptide encompassing a sequence within the center region of mouse Wdr62. The exact sequence is proprietary.
Purification	Purified by antigen-affinity chromatography.
Conjugation	Unconjugated

Note

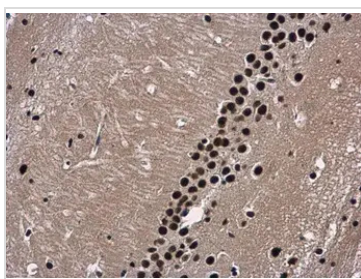
For laboratory research use only. Not for any clinical, therapeutic, or diagnostic use in humans or animals. Not for animal or human consumption.

Purchasers shall not, and agree not to enable third parties to, analyze, copy, reverse engineer or otherwise attempt to determine the structure or sequence of the product.

For full product information, images and publications, please visit our [website](#).

DATA IMAGES

GTx119724 WB Image

Whole cell extract (30 µg) was separated by 5% SDS-PAGE, and the membrane was blotted with Wdr62 antibody (GTx119724) diluted at 1:1000.

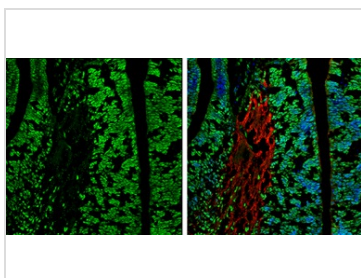

GTx119724 IHC-P Image

Wdr62 antibody detects Wdr62 protein at nucleus in mouse brain by immunohistochemical analysis.

Sample: Paraffin-embedded mouse brain.

Wdr62 antibody (GTx119724) diluted at 1:500.

Antigen Retrieval: Citrate buffer, pH 6.0, 15 min


GTx119724 IHC-Fr Image

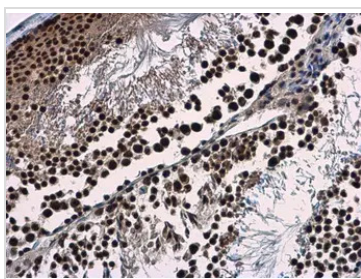
Wdr62 antibody detects Wdr62 protein by immunohistochemical analysis.

Sample: Frozen-sectioned rat E13.5 brain.

Green: Wdr62 stained by Wdr62 antibody (GTx119724) diluted at 1:250.

Red: beta Tubulin 3/ Tuj1, stained by beta Tubulin 3/ Tuj1 antibody [GT1338] (GTx631831) diluted at 1:500.

Blue: Fluoroshield with DAPI (GTx30920).


GTx119724 IHC-P Image

Wdr62 antibody detects Wdr62 protein at nucleus in mouse testis by immunohistochemical analysis.

Sample: Paraffin-embedded mouse testis.

Wdr62 antibody (GTx119724) diluted at 1:500.

Antigen Retrieval: Citrate buffer, pH 6.0, 15 min



For full product information, images and publications, please visit our [website](https://www.genetex.com).