

## Pygopus 2 antibody

**Cat. No. GTX119726**

<b>Host</b>	Rabbit
<b>Clonality</b>	Polyclonal
<b>Isotype</b>	IgG
<b>Applications</b>	WB, ICC/IF, IHC-P, IP, ChIP assay
<b>Reactivity</b>	Human, Mouse, Rat

References ( 3 )

Package

100 µl, 25 µl

## Applications

**Application Note**

\*Optimal dilutions/concentrations should be determined by the researcher.

Suggested dilution	Recommended dilution
WB	1:500-1:3000
ICC/IF	1:100-1:1000
IHC-P	1:100-1:1000
IP	1:100-1:500
ChIP assay	Assay dependent

Not tested in other applications.

## Properties

<b>Form</b>	Liquid
<b>Buffer</b>	PBS, 20% Glycerol
<b>Preservative</b>	0.025% ProClin 300
<b>Storage</b>	Store as concentrated solution. Centrifuge briefly prior to opening vial. For short-term storage (1-2 weeks), store at 4°C. For long-term storage, aliquot and store at -20°C or below. Avoid multiple freeze-thaw cycles.
<b>Concentration</b>	0.65 mg/ml (Please refer to the vial label for the specific concentration.)
<b>Immunogen</b>	Full length mouse Pygopus 2 Recombinant protein.
<b>Purification</b>	Purified by antigen-affinity chromatography.
<b>Conjugation</b>	Unconjugated

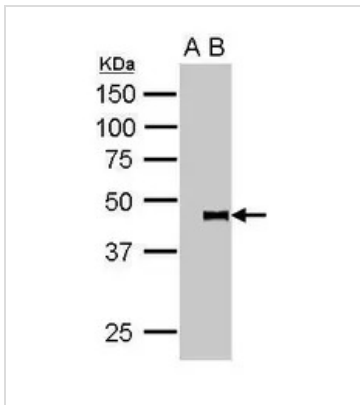
**Note**

For laboratory research use only. Not for any clinical, therapeutic, or diagnostic use in humans or animals. Not for animal or human consumption.

Purchasers shall not, and agree not to enable third parties to, analyze, copy, reverse engineer or otherwise attempt to determine the structure or sequence of the product.

For full product information, images and publications, please visit our [website](#).

DATA IMAGES



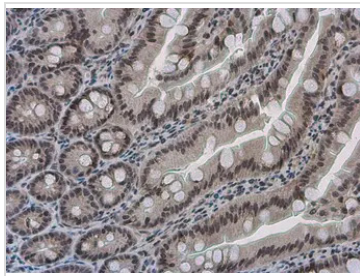
**GTX119726 IP Image**

GTX119726 IP Image

Pygopus 2 was immunoprecipitated from  $5 \times 10^7$  cells of SW480 whole cell lysate using 1  $\mu$ g of anti-pygopus 2 antibody (GTX119726).

The precipitated pygopus 2 was detected by GTX119726 diluted at 1:15000. A: IP-IgG

B: IP-pygopus 2 antibody



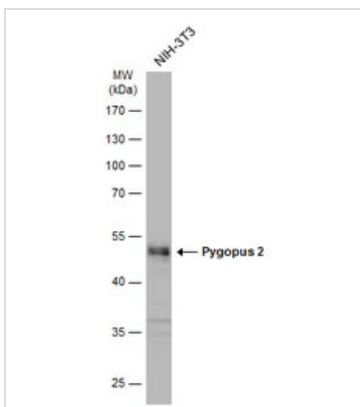
**GTX119726 IHC-P Image**

Pygopus 2 antibody detects Pygopus 2 protein at nucleus in rat intestine by immunohistochemical analysis.

Sample: Paraffin-embedded rat intestine.

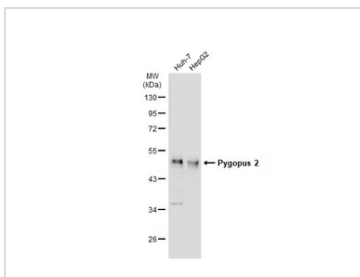
Pygopus 2 antibody (GTX119726) diluted at 1:500.

Antigen Retrieval: Citrate buffer, pH 6.0, 15 min



**GTX119726 WB Image**

Whole cell extract (30  $\mu$ g) was separated by 10% SDS-PAGE, and the membrane was blotted with Pygopus 2 antibody (GTX119726) diluted at 1:1000. The HRP-conjugated anti-rabbit IgG antibody (GTX213110-01) was used to detect the primary antibody.



**GTX119726 WB Image**

Various whole cell extracts (30  $\mu$ g) were separated by 10% SDS-PAGE, and the membrane was blotted with Pygopus 2 antibody (GTX119726) diluted at 1:500. The HRP-conjugated anti-rabbit IgG antibody (GTX213110-01) was used to detect the primary antibody, and the signal was developed with Trident ECL plus-Enhanced.



For full product information, images and publications, please visit our [website](http://www.genetex.com).