

PSPC1 antibody

Cat. No. GTX119744

Host	Rabbit
Clonality	Polyclonal
Isotype	IgG
Applications	WB, ICC/IF, IHC-P
Reactivity	Human, Mouse, Rat

Package
100 µl, 25 µl

Applications

Application Note

*Optimal dilutions/concentrations should be determined by the researcher.

Suggested dilution	Recommended dilution
WB	1:500-1:3000
ICC/IF	1:100-1:1000
IHC-P	1:100-1:1000

Not tested in other applications.

Calculated MW 59 kDa. ([Note](#))

Properties

Form	Liquid
Buffer	PBS, 20% Glycerol
Preservative	0.01% Thimerosal
Storage	Store as concentrated solution. Centrifuge briefly prior to opening vial. For short-term storage (1-2 weeks), store at 4°C. For long-term storage, aliquot and store at -20°C or below. Avoid multiple freeze-thaw cycles.
Concentration	1 mg/ml (Please refer to the vial label for the specific concentration.)
Immunogen	Recombinant protein encompassing a sequence within the center region of human PSPC1. The exact sequence is proprietary.
Purification	Purified by antigen-affinity chromatography.
Conjugation	Unconjugated

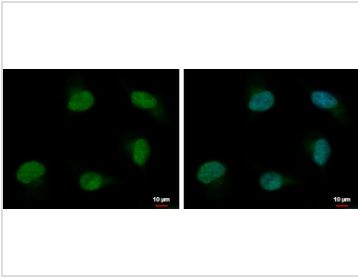
Note

For laboratory research use only. Not for any clinical, therapeutic, or diagnostic use in humans or animals. Not for animal or human consumption.

Purchasers shall not, and agree not to enable third parties to, analyze, copy, reverse engineer or otherwise attempt to determine the structure or sequence of the product.



For full product information, images and publications, please visit our [website](#).

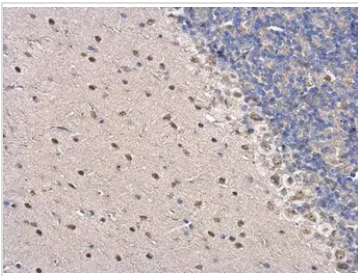
DATA IMAGES

GTx119744 ICC/IF Image

PSPC1 antibody detects PSPC1 protein at nucleus by immunofluorescent analysis.

Sample: HeLa cells were fixed in 4% paraformaldehyde at RT for 15 min.

Green: PSPC1 protein stained by PSPC1 antibody (GTx119744) diluted at 1:500.

Blue: Hoechst 33342 staining.

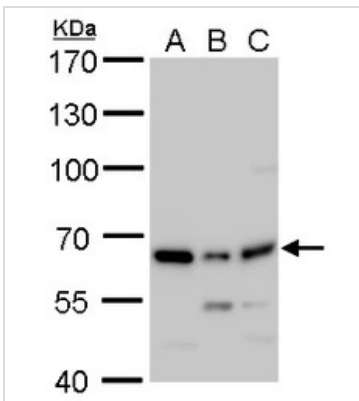

GTx119744 IHC-P Image

PSPC1 antibody detects PSPC1 protein at nucleus on mouse hind brain by immunohistochemical analysis.

Sample: Paraffin-embedded mouse hind brain.

PSPC1 antibody (GTx119744) dilution: 1:500.

Antigen Retrieval: Trilogy™ (EDTA based, pH 8.0) buffer, 15min


GTx119744 WB Image

PSPC1 antibody detects PSPC1 protein by western blot analysis.

A. 30 µg 293T whole cell lysate/extract

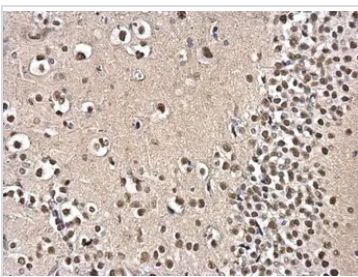
B. 30 µg HeLa whole cell lysate/extract

C. 30 µg HepG2 whole cell lysate/extract

7.5% SDS-PAGE

PSPC1 antibody (GTx119744) dilution: 1:2000

The HRP-conjugated anti-rabbit IgG antibody (GTx213110-01) was used to detect the primary antibody.


GTx119744 IHC-P Image

PSPC1 antibody detects PSPC1 protein at nucleus on rat fore brain by immunohistochemical analysis.

Sample: Paraffin-embedded rat fore brain.

PSPC1 antibody (GTx119744) dilution: 1:500.

Antigen Retrieval: Trilogy™ (EDTA based, pH 8.0) buffer, 15min



For full product information, images and publications, please visit our [website](http://www.genetex.com).