

CHCHD3 antibody [N1C3]

Cat. No. GTX119821

Host	Rabbit
Clonality	Polyclonal
Isotype	IgG
Application	WB, IHC-P
Reactivity	Human, Mouse

Reference (1)

Package

100 µl, 25 µl

APPLICATION

Application Note

*Optimal dilutions/concentrations should be determined by the researcher.

Suggested dilution	Recommended dilution
WB	1:500-1:10000
IHC-P	1:100-1:1000

Not tested in other applications.

Calculated MW 26 kDa. ([Note](#))

PROPERTIES

Form	Liquid
Buffer	0.1M Tris, 0.1M Glycine, 20% Glycerol
Preservative	0.01% Thimerosal
Storage	Store as concentrated solution. Centrifuge briefly prior to opening vial. For short-term storage (1-2 weeks), store at 4°C. For long-term storage, aliquot and store at -20°C or below. Avoid multiple freeze-thaw cycles.
Concentration	1 mg/ml (Please refer to the vial label for the specific concentration.)
Immunogen	Recombinant protein encompassing a sequence within the center region of human CHCHD3. The exact sequence is proprietary.
Purification	Purified by antigen-affinity chromatography.
Conjugation	Unconjugated

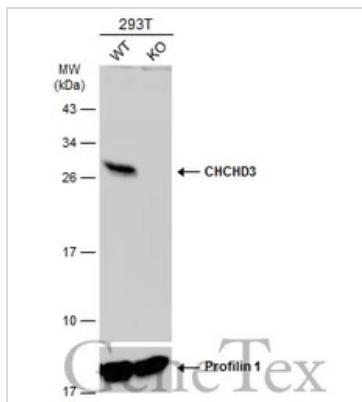
Note

For laboratory research use only. Not for any clinical, therapeutic, or diagnostic use in humans or animals. Not for animal or human consumption.

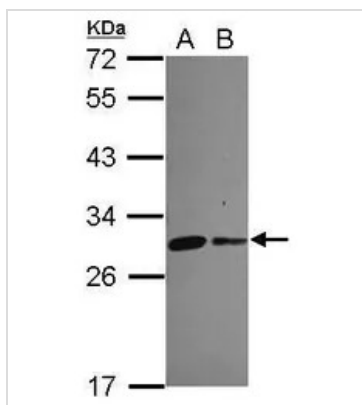
Purchasers shall not, and agree not to enable third parties to, analyze, copy, reverse engineer or otherwise attempt to determine the structure or sequence of the product.



For full product information, images and publications, please visit our [website](#).

DATA IMAGES

GTKX119821 WB Image

Wild-type (WT) and CHCHD3 knockout (KO) 293T cell extracts (30 µg) were separated by 12% SDS-PAGE, and the membrane was blotted with CHCHD3 antibody [N1C3] (GTKX119821) diluted at 1:2000. The HRP-conjugated anti-rabbit IgG antibody (GTKX213110-01) was used to detect the primary antibody.


GTKX119821 WB Image

Sample (30 µg of whole cell lysate)

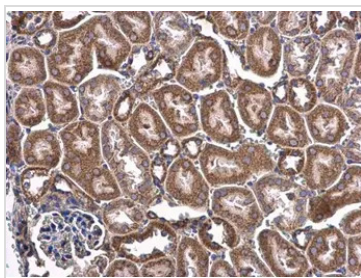
A: 293T

B: A431 (GTKX27909)

12% SDS PAGE

GTKX119821 diluted at 1:5000

The HRP-conjugated anti-rabbit IgG antibody (GTKX213110-01) was used to detect the primary antibody.

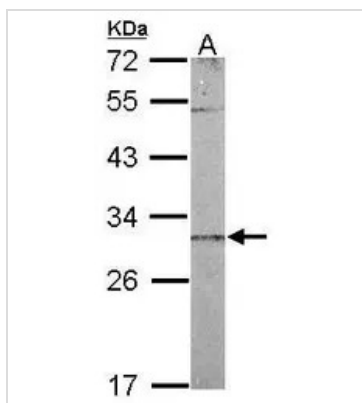

GTKX119821 IHC-P Image

CHCHD3 antibody [N1C3] detects CHCHD3 protein at cytoplasm in mouse kidney by immunohistochemical analysis.

Sample: Paraffin-embedded mouse kidney.

CHCHD3 antibody [N1C3] (GTKX119821) diluted at 1:500.

Antigen Retrieval: Citrate buffer, pH 6.0, 15 min


GTKX119821 WB Image

Sample (50 µg of whole cell lysate)

A: mouse liver

12% SDS PAGE

GTKX119821 diluted at 1:1000

The HRP-conjugated anti-rabbit IgG antibody (GTKX213110-01) was used to detect the primary antibody.



For full product information, images and publications, please visit our [website](https://www.genetex.com).