

PABPC5 antibody [N1C2]

Cat. No. GTX119883

Host	Rabbit
Clonality	Polyclonal
Isotype	IgG
Applications	WB, IHC-P
Reactivity	Human, Mouse, Rat

Package
100 µl, 25 µl

Applications

Application Note

*Optimal dilutions/concentrations should be determined by the researcher.

Suggested dilution	Recommended dilution
WB	1:500-1:3000
IHC-P	1:100-1:1000

Not tested in other applications.

Calculated MW 43 kDa. ([Note](#))

Properties

Form	Liquid
Buffer	PBS, 1% BSA, 20% Glycerol
Preservative	0.01% Thimerosal
Storage	Store as concentrated solution. Centrifuge briefly prior to opening vial. For short-term storage (1-2 weeks), store at 4°C. For long-term storage, aliquot and store at -20°C or below. Avoid multiple freeze-thaw cycles.
Concentration	1 mg/ml (Please refer to the vial label for the specific concentration.)
Immunogen	Recombinant protein encompassing a sequence within the center region of human PABPC5. The exact sequence is proprietary.
Purification	Purified by antigen-affinity chromatography.
Conjugation	Unconjugated

Note

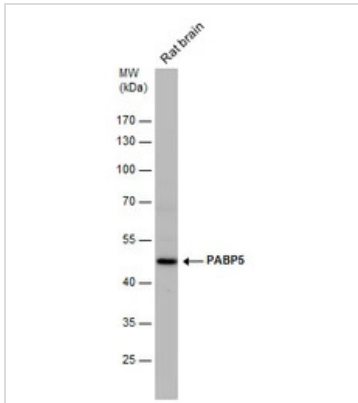
For laboratory research use only. Not for any clinical, therapeutic, or diagnostic use in humans or animals. Not for animal or human consumption.

Purchasers shall not, and agree not to enable third parties to, analyze, copy, reverse engineer or otherwise attempt to determine the structure or sequence of the product.



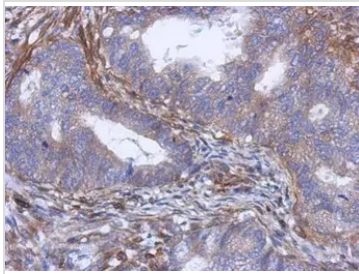
For full product information, images and publications, please visit our [website](#).

DATA IMAGES



GTx119883 WB Image

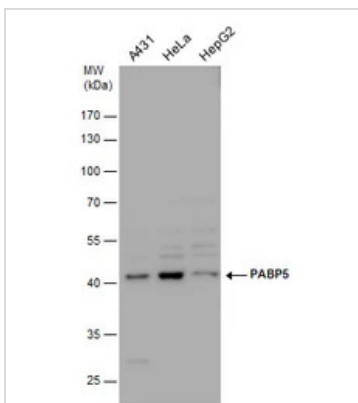
PABP5 antibody detects PABP5 protein by western blot analysis. Rat tissue extracts (50 µg) was separated by 10 % SDS-PAGE, and the membrane was blotted with PABP5 antibody (GTx119883) diluted by 1:1000.



GTx119883 IHC-P Image

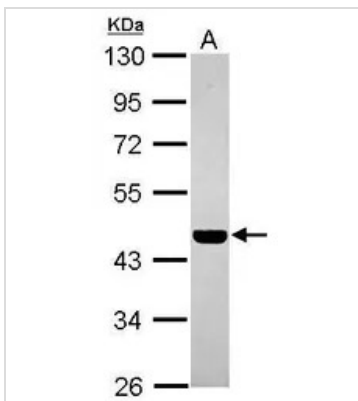
Immunohistochemical analysis of paraffin-embedded human gastric cancer, using PABP5(GTx119883) antibody at 1:500 dilution.

Antigen Retrieval: Trilogy™ (EDTA based, pH 8.0) buffer, 15min



GTx119883 WB Image

PABP5 antibody detects PABP5 protein by western blot analysis. Various whole cell extracts (30 µg) were separated by 10% SDS-PAGE, and the membrane was blotted with PABP5 antibody (GTx119883) diluted by 1:1000.



GTx119883 WB Image

Sample (30 ug of whole cell lysate)

A: U87-MG

10% SDS PAGE

GTx119883 diluted at 1:1000



For full product information, images and publications, please visit our [website](https://www.genetex.com).