

OVOL2 antibody

Cat. No. GTX120220

Host	Rabbit
Clonality	Polyclonal
Isotype	IgG
Applications	WB, IP, ChIP assay
Reactivity	Human, Mouse

References (1)

Package

100 µl, 25 µl

Applications

Application Note

*Optimal dilutions/concentrations should be determined by the researcher.

Suggested dilution	Recommended dilution
WB	1:500-1:3000
IP	Assay dependent
ChIP assay	Assay dependent

Not tested in other applications.

Calculated MW 31 kDa. ([Note](#))

Properties

Form	Liquid
Buffer	PBS, 1% BSA, 20% Glycerol
Preservative	0.01% Thimerosal
Storage	Store as concentrated solution. Centrifuge briefly prior to opening vial. For short-term storage (1-2 weeks), store at 4°C. For long-term storage, aliquot and store at -20°C or below. Avoid multiple freeze-thaw cycles.
Concentration	1 mg/ml (Please refer to the vial label for the specific concentration.)
Immunogen	Recombinant protein encompassing a sequence within the center region of mouse OVOL2. The exact sequence is proprietary.
Purification	Purified by antigen-affinity chromatography.
Conjugation	Unconjugated

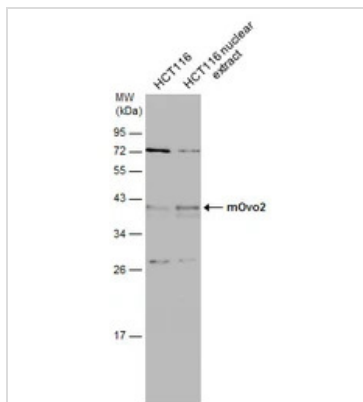
Note

For laboratory research use only. Not for any clinical, therapeutic, or diagnostic use in humans or animals. Not for animal or human consumption.

Purchasers shall not, and agree not to enable third parties to, analyze, copy, reverse engineer or otherwise attempt to determine the structure or sequence of the product.

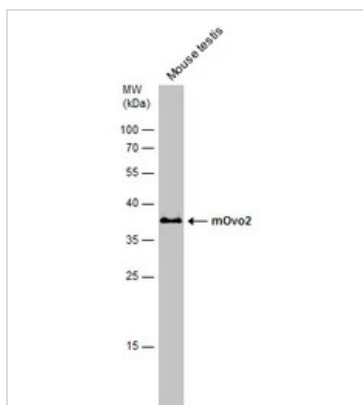
For full product information, images and publications, please visit our [website](#).

DATA IMAGES



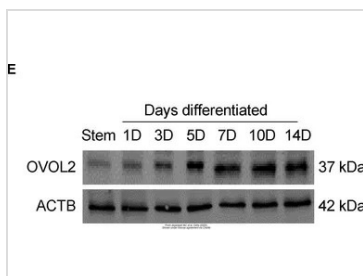
GTX120220 WB Image

HCT-116 whole cell and nuclear extracts (30 µg) were separated by 12% SDS-PAGE, and the membrane was blotted with mOvo2 antibody (GTX120220) diluted at 1:1000.



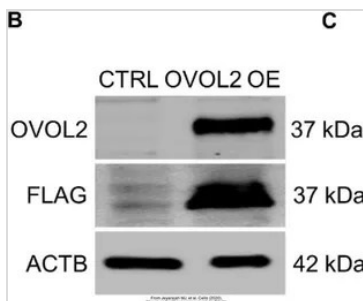
GTX120220 WB Image

Mouse tissue extract (50 µg) was separated by 12% SDS-PAGE, and the membrane was blotted with mOvo2 antibody (GTX120220) diluted at 1:500.



GTX120220 WB Image

The data was published in the journal Cells in 2020. [PMID: 32244352](https://pubmed.ncbi.nlm.nih.gov/32244352/)



GTX120220 WB Image

The data was published in the journal Cells in 2020. [PMID: 32244352](https://pubmed.ncbi.nlm.nih.gov/32244352/)



For full product information, images and publications, please visit our [website](https://www.genetex.com).