

MYPT1 antibody

Cat. No. GTX12027

Host	Rabbit
Clonality	Polyclonal
Isotype	IgG
Applications	WB, FCM
Reactivity	Human, Mouse, Rat

Package
100 µg

Applications

Application Note

*Optimal dilutions/concentrations should be determined by the researcher.

Suggested dilution	Recommended dilution
WB	0.1-0.5µg/ml
FCM	1-3µg/1x10 ⁶ cells

Not tested in other applications.

Calculated MW 115.28 kDa. ([Note](#))

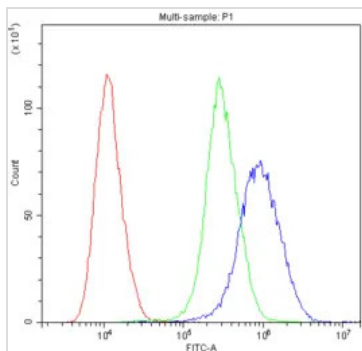
Properties

Form	Liquid
Buffer	0.1% Na ₂ HPO ₄ , 0.45% NaCl, 2.5% BSA
Preservative	0.025% Thimerosal, 0.025% Sodium azide
Storage	Store as concentrated solution. Centrifuge briefly prior to opening vial. For short-term storage (1-2 weeks), store at 4°C. For long-term storage, aliquot and store at -20°C or below. Avoid multiple freeze-thaw cycles.
Concentration	500 µg/ml (Please refer to the vial label for the specific concentration.)
Immunogen	A synthetic peptide corresponding to a sequence at the N-terminus of human PPP1R12A (1-17aa MKMADAKQKRNEQLKRW), identical to the related rat and mouse sequences.
Purification	Purified by antigen-affinity chromatography
Conjugation	Unconjugated
Note	For laboratory research use only. Not for any clinical, therapeutic, or diagnostic use in humans or animals. Not for animal or human consumption. Purchasers shall not, and agree not to enable third parties to, analyze, copy, reverse engineer or otherwise attempt to determine the structure or sequence of the product.



For full product information, images and publications, please visit our [website](#).

DATA IMAGES



GTX12027 FCM Image

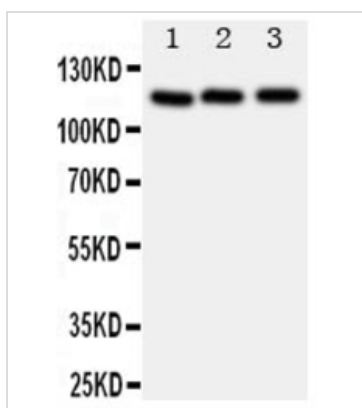
FACS analysis of U251 cells using GTX12027 MYPT1 antibody.

Blue : Primary antibody

Green : Isotype control

Red : Cell only control

Antibody amount : 1µg/1x10⁶ cells for 30 min at 20°C



GTX12027 WB Image

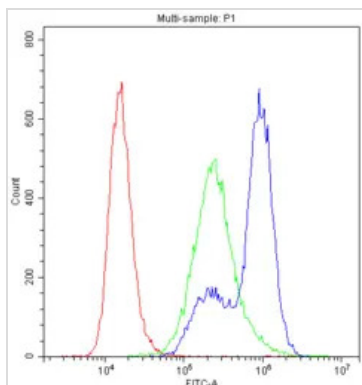
WB analysis of various samples using GTX12027 MYPT1 antibody.

Lane 1 : rat liver tissue lysate at 50ug

Lane 2 : 293T whole cell lysate at 40ug

Lane 3 : HeLa whole cell lysate at 40ug

Dilution : 0.5 µg/mL



GTX12027 FCM Image

FACS analysis of HeLa cells using GTX12027 MYPT1 antibody.

Blue : Primary antibody

Green : Isotype control

Red : Cell only control

Antibody amount : 1µg/1x10⁶ cells for 30 min at 20°C



For full product information, images and publications, please visit our [website](#).