

## RAB35 antibody [N1C3]

**Cat. No. GTX120294**

<b>Host</b>	Rabbit
<b>Clonality</b>	Polyclonal
<b>Isotype</b>	IgG
<b>Applications</b>	WB, ICC/IF, IHC-P
<b>Reactivity</b>	Human, Mouse, Rat, Hamster

References ( 1 )

 Review ( 2 )

Package

100 µl, 25 µl

## Applications

**Application Note**

\*Optimal dilutions/concentrations should be determined by the researcher.

Suggested dilution	Recommended dilution
WB	1:500-1:3000
ICC/IF	1:100-1:1000
IHC-P	1:100-1:1000

Not tested in other applications.

**Calculated MW** 23 kDa. ( [Note](#) )**Product Note** KO/KD validation is based on independent review by YCharOS.

## Properties

<b>Form</b>	Liquid
<b>Buffer</b>	PBS, 1% BSA, 20% Glycerol
<b>Preservative</b>	0.025% ProClin 300
<b>Storage</b>	Store as concentrated solution. Centrifuge briefly prior to opening vial. For short-term storage (1-2 weeks), store at 4°C. For long-term storage, aliquot and store at -20°C or below. Avoid multiple freeze-thaw cycles.
<b>Concentration</b>	0.24 mg/ml (Please refer to the vial label for the specific concentration.)
<b>Immunogen</b>	Recombinant protein encompassing a sequence within the center region of human RAB35. The exact sequence is proprietary.
<b>Purification</b>	Purified by antigen-affinity chromatography.
<b>Conjugation</b>	Unconjugated



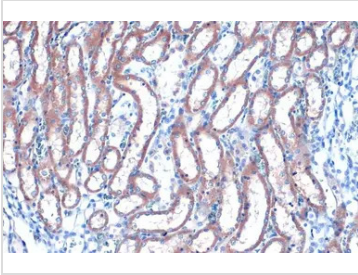
For full product information, images and publications, please visit our [website](#).

For laboratory research use only. Not for any clinical, therapeutic, or diagnostic use in humans or animals. Not for animal or human consumption.

**Note**

Purchasers shall not, and agree not to enable third parties to, analyze, copy, reverse engineer or otherwise attempt to determine the structure or sequence of the product.

## DATA IMAGES

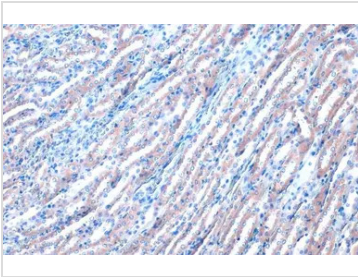
**GTX120294 IHC-P Image**

RAB35 antibody [N1C3] detects RAB35 protein at cytoplasm by immunohistochemical analysis.

Sample: Paraffin-embedded rat kidney.

RAB35 stained by RAB35 antibody [N1C3] (GTX120294) diluted at 1:500.

Antigen Retrieval: Citrate buffer, pH 6.0, 15 min

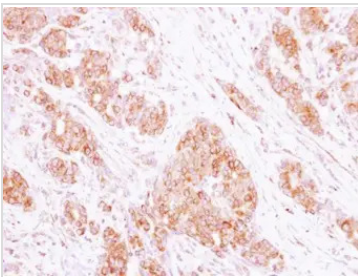
**GTX120294 IHC-P Image**

RAB35 antibody [N1C3] detects RAB35 protein at cytoplasm by immunohistochemical analysis.

Sample: Paraffin-embedded mouse kidney.

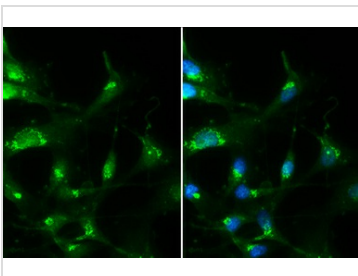
RAB35 stained by RAB35 antibody [N1C3] (GTX120294) diluted at 1:500.

Antigen Retrieval: Citrate buffer, pH 6.0, 15 min

**GTX120294 IHC-P Image**

Immunohistochemical analysis of paraffin-embedded human breast cancer, using RAB35(GTX120294) antibody at 1:250 dilution.

Antigen Retrieval: Citrate buffer, pH 6.0, 15 min

**GTX120294 ICC/IF Image**

RAB35 antibody [N1C3] detects RAB35 protein at Golgi apparatus by immunofluorescent analysis.

Sample: U87-MG cells were fixed in 4% paraformaldehyde at RT for 15 min.

Green: RAB35 stained by RAB35 antibody [N1C3] (GTX120294) diluted at 1:500.

Blue: Hoechst 33342 staining.



For full product information, images and publications, please visit our [website](#).