

RAB35 antibody [N1C3]

Cat. No. GTX120294

Host	Rabbit
Clonality	Polyclonal
Isotype	IgG
Applications	WB, ICC/IF, IHC-P
Reactivity	Human, Mouse, Rat, Hamster

References (1)

★★★★☆ Review (1)

Package

100 µl, 25 µl

Applications

Application Note

*Optimal dilutions/concentrations should be determined by the researcher.

Suggested dilution	Recommended dilution
WB	1:500-1:3000
ICC/IF	1:100-1:1000
IHC-P	1:100-1:1000

Not tested in other applications.

Calculated MW 23 kDa. ([Note](#))

Properties

Form	Liquid
Buffer	PBS, 1% BSA, 20% Glycerol
Preservative	0.025% ProClin 300
Storage	Store as concentrated solution. Centrifuge briefly prior to opening vial. For short-term storage (1-2 weeks), store at 4°C. For long-term storage, aliquot and store at -20°C or below. Avoid multiple freeze-thaw cycles.
Concentration	0.24 mg/ml (Please refer to the vial label for the specific concentration.)
Immunogen	Recombinant protein encompassing a sequence within the center region of human RAB35. The exact sequence is proprietary.
Purification	Purified by antigen-affinity chromatography.
Conjugation	Unconjugated

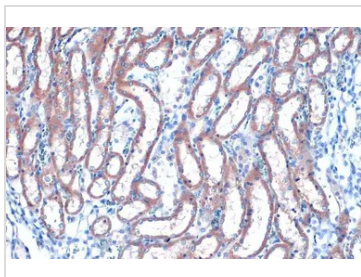
Note

For laboratory research use only. Not for any clinical, therapeutic, or diagnostic use in humans or animals. Not for animal or human consumption.

Purchasers shall not, and agree not to enable third parties to, analyze, copy, reverse engineer or otherwise attempt to determine the structure or sequence of the product.



For full product information, images and publications, please visit our [website](#).

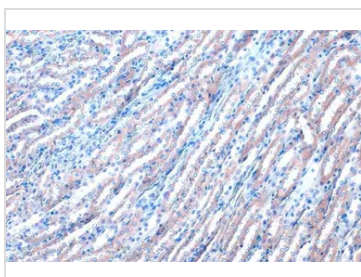
DATA IMAGES

GTX120294 IHC-P Image

RAB35 antibody [N1C3] detects RAB35 protein at cytoplasm by immunohistochemical analysis.

Sample: Paraffin-embedded rat kidney.

RAB35 stained by RAB35 antibody [N1C3] (GTX120294) diluted at 1:500.

Antigen Retrieval: Citrate buffer, pH 6.0, 15 min

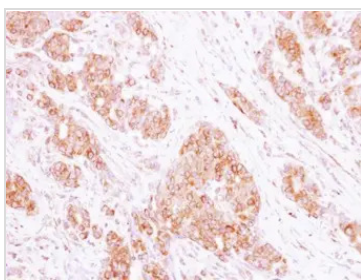

GTX120294 IHC-P Image

RAB35 antibody [N1C3] detects RAB35 protein at cytoplasm by immunohistochemical analysis.

Sample: Paraffin-embedded mouse kidney.

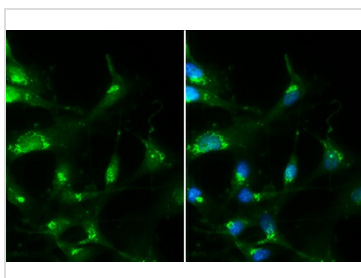
RAB35 stained by RAB35 antibody [N1C3] (GTX120294) diluted at 1:500.

Antigen Retrieval: Citrate buffer, pH 6.0, 15 min


GTX120294 IHC-P Image

Immunohistochemical analysis of paraffin-embedded human breast cancer, using RAB35(GTX120294) antibody at 1:250 dilution.

Antigen Retrieval: Citrate buffer, pH 6.0, 15 min

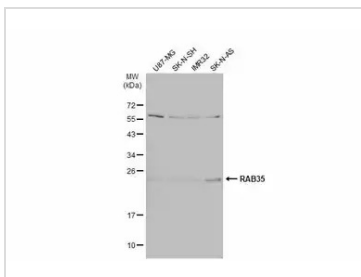

GTX120294 ICC/IF Image

RAB35 antibody [N1C3] detects RAB35 protein at Golgi apparatus by immunofluorescent analysis.

Sample: U87-MG cells were fixed in 4% paraformaldehyde at RT for 15 min.

Green: RAB35 stained by RAB35 antibody [N1C3] (GTX120294) diluted at 1:500.

Blue: Hoechst 33342 staining.


GTX120294 WB Image

Various whole cell extracts (30 µg) were separated by 12% SDS-PAGE, and the membrane was blotted with RAB35 antibody [N1C3] (GTX120294) diluted at 1:1000. The HRP-conjugated anti-rabbit IgG antibody (GTX213110-01) was used to detect the primary antibody.



For full product information, images and publications, please visit our [website](https://www.genetex.com).