

MITF antibody [C5]

Cat. No. GTX12039

Host	Mouse
Clonality	Monoclonal
Isotype	IgG1
Applications	WB, IHC-P, IHC-Fr, IP, Gel supershift assays
Reactivity	Human, Mouse, Rat

References (1)

Package

50 µg

Applications

Application Note

For IP: Use at a concentration of 2 µg/ml. For WB: Use at a concentration of 1 µg/ml. Optimal dilutions/concentrations should be determined by the researcher.

Calculated MW 59 kDa. ([Note](#))

Properties

Form	Liquid
Buffer	PBS
Preservative	0.08% Sodium azide
Storage	Store as concentrated solution. Centrifuge briefly prior to opening vial. For short-term storage (1-2 weeks), store at 4°C. For long-term storage, aliquot and store at -20°C or below. Avoid multiple freeze-thaw cycles.
Concentration	1 mg/ml (Please refer to the vial label for the specific concentration.)
Immunogen	N-terminal fragment of human microphthalmia protein and mouse myeloma NS1 cells.
Purification	Protein G purified
Conjugation	Unconjugated

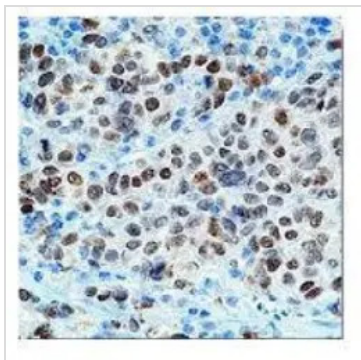
Note

For laboratory research use only. Not for any clinical, therapeutic, or diagnostic use in humans or animals. Not for animal or human consumption.

Purchasers shall not, and agree not to enable third parties to, analyze, copy, reverse engineer or otherwise attempt to determine the structure or sequence of the product.



For full product information, images and publications, please visit our [website](#).

DATA IMAGES

GTX12039 IHC-P Image

Immunohistochemical staining using microphthalmia antibody on formalin fixed, paraffin embedded human melanoma.



For full product information, images and publications, please visit our [website](#).