

# Kallikrein 1 antibody

**Cat. No. GTX12058**

<b>Host</b>	Rabbit
<b>Clonality</b>	Polyclonal
<b>Isotype</b>	IgG
<b>Applications</b>	WB, IHC-P
<b>Reactivity</b>	Mouse, Rat

**Package**  
100 µg

## Applications

### Application Note

\*Optimal dilutions/concentrations should be determined by the researcher.

Suggested dilution	Recommended dilution
WB	0.1-0.5µg/ml
IHC-P	0.5-1µg/ml

Not tested in other applications.

**Calculated MW** 29 kDa. ( [Note](#) )

## Properties

<b>Form</b>	Liquid
<b>Buffer</b>	0.1% Na <sub>2</sub> HPO <sub>4</sub> , 0.45% NaCl, 2.5% BSA
<b>Preservative</b>	0.025% Thimerosal, 0.025% Sodium azide
<b>Storage</b>	Store as concentrated solution. Centrifuge briefly prior to opening vial. For short-term storage (1-2 weeks), store at 4°C. For long-term storage, aliquot and store at -20°C or below. Avoid multiple freeze-thaw cycles.
<b>Concentration</b>	500 µg/ml (Please refer to the vial label for the specific concentration.)
<b>Immunogen</b>	A synthetic peptide corresponding to a sequence at the C-terminus of mouse Kallikrein 1(243-261aa YTRVLNFWIRETMAEND).
<b>Purification</b>	Purified by antigen-affinity chromatography
<b>Conjugation</b>	Unconjugated

### Note

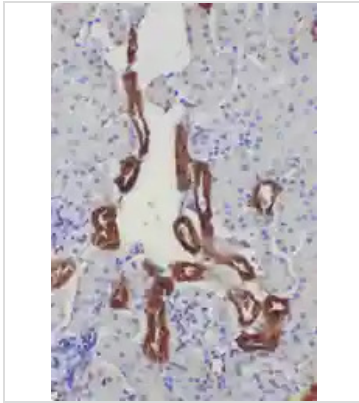
For laboratory research use only. Not for any clinical, therapeutic, or diagnostic use in humans or animals. Not for animal or human consumption.

Purchasers shall not, and agree not to enable third parties to, analyze, copy, reverse engineer or otherwise attempt to determine the structure or sequence of the product.



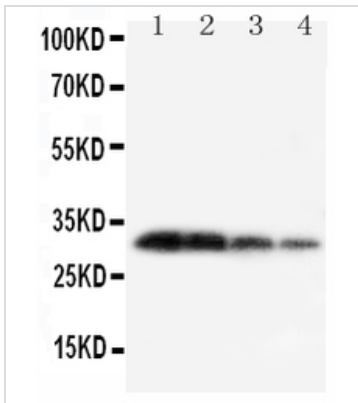
For full product information, images and publications, please visit our [website](#).

## DATA IMAGES



### GTX12058 IHC-P Image

IHC-P analysis of mouse kidney tissue using GTX12058 Kallikrein 1 antibody.



### GTX12058 WB Image

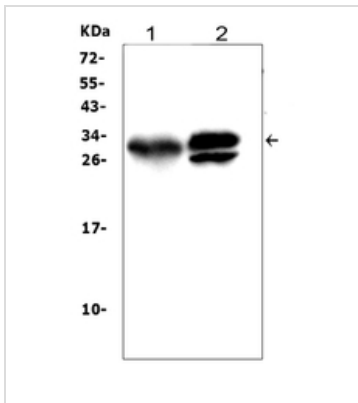
WB analysis of various samples using GTX12058 Kallikrein 1 antibody.

Lane 1 : Recombinant mouse KLK1 protein 10ng

Lane 2 : Recombinant mouse KLK1 protein 5ng

Lane 3 : Recombinant mouse KLK1 protein 2.5ng

Lane 4 : Recombinant mouse KLK1 protein 1.25ng



### GTX12058 WB Image

WB analysis of various samples using GTX12058 Kallikrein 1 antibody.

Lane 1 : rat pancreas tissue lysates

Lane 2 : mouse pancreas tissue lysates

Dilution : 0.5 µg/mL

Loading : 50µg of sample under reducing conditions



For full product information, images and publications, please visit our [website](http://www.genetex.com).