

## MCM2 antibody

Cat. No. GTX12059

Host	Rabbit
Clonality	Polyclonal
Isotype	IgG
Applications	WB, ICC/IF, IHC-P
Reactivity	Mouse, Rat

Package  
100 µg

## Applications

## Application Note

\*Optimal dilutions/concentrations should be determined by the researcher.

Suggested dilution	Recommended dilution
WB	0.1-0.5µg/ml
ICC/IF	0.5-1µg/ml
IHC-P	0.5-1µg/ml

Not tested in other applications.

Calculated MW 102 kDa. ([Note](#))

## Properties

Form	Liquid
Buffer	0.1% Na <sub>2</sub> HPO <sub>4</sub> , 0.45% NaCl, 2.5% BSA
Preservative	0.025% Thimerosal, 0.025% Sodium azide
Storage	Store as concentrated solution. Centrifuge briefly prior to opening vial. For short-term storage (1-2 weeks), store at 4°C. For long-term storage, aliquot and store at -20°C or below. Avoid multiple freeze-thaw cycles.
Concentration	500 µg/ml (Please refer to the vial label for the specific concentration.)
Immunogen	A synthetic peptide corresponding to a sequence at the C-terminus of mouse MCM2(884-904aa DLFKFNKFSRDLKRKLILQQF), different from the related rat sequence by one amino acid.
Purification	Purified by antigen-affinity chromatography
Conjugation	Unconjugated

## Note

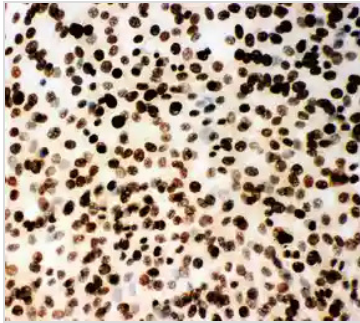
For laboratory research use only. Not for any clinical, therapeutic, or diagnostic use in humans or animals. Not for animal or human consumption.

Purchasers shall not, and agree not to enable third parties to, analyze, copy, reverse engineer or otherwise attempt to determine the structure or sequence of the product.



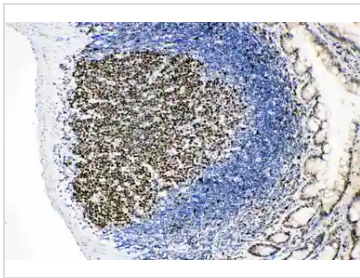
For full product information, images and publications, please visit our [website](#).

## DATA IMAGES



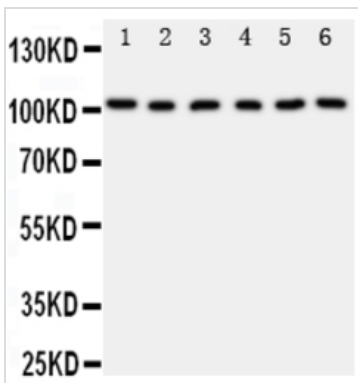
### GTX12059 ICC/IF Image

ICC/IF analysis of NIH3T3 cell using GTX12059 MCM2 antibody.



### GTX12059 IHC-P Image

IHC-P analysis of rat intestinal lymphocyte tissue using GTX12059 MCM2 antibody.



### GTX12059 WB Image

WB analysis of various samples using GTX12059 MCM2 antibody.

Lane 1 : rat testis tissue lysate at 50ug

Lane 2 : rat kidney tissue lysate at 50ug

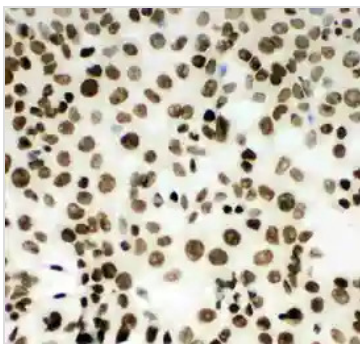
Lane 3 : mouse Intestine tissue lysate at 50ug

Lane 4 : mouse testis tissue lysate at 50ug

Lane 5 : mouse ovary tissue lysate at 50ug

Lane 6 : mouse kidney tissue lysate at 50ug

Dilution : 0.5 µg/mL



### GTX12059 ICC/IF Image

ICC/IF analysis of HEPA cell using GTX12059 MCM2 antibody.



For full product information, images and publications, please visit our [website](https://www.genetex.com).