

STCH antibody

Cat. No. GTX120858

Host	Rabbit
Clonality	Polyclonal
Isotype	IgG
Applications	WB
Reactivity	Human

Package
100 µl, 25 µl

Applications

Application Note

*Optimal dilutions/concentrations should be determined by the researcher.

Suggested dilution	Recommended dilution
WB	1:500-1:3000

Not tested in other applications.

Calculated MW 52 kDa. ([Note](#))

Observed MW (kDa) 60 kDa. The observed M.W. is based on the following publication. PMID: 8131751

Properties

Form Liquid

Buffer 0.1M Tris, 0.1M Glycine, 20% Glycerol

Preservative 0.01% Thimerosal

Storage Store as concentrated solution. Centrifuge briefly prior to opening vial. For short-term storage (1-2 weeks), store at 4°C. For long-term storage, aliquot and store at -20°C or below. Avoid multiple freeze-thaw cycles.

Concentration 0.82 mg/ml (Please refer to the vial label for the specific concentration.)

Immunogen Recombinant protein encompassing a sequence within the center region of human STCH. The exact sequence is proprietary.

Purification Purified by antigen-affinity chromatography.

Conjugation Unconjugated

Note

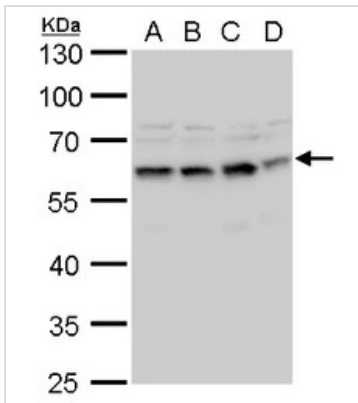
For laboratory research use only. Not for any clinical, therapeutic, or diagnostic use in humans or animals. Not for animal or human consumption.

Purchasers shall not, and agree not to enable third parties to, analyze, copy, reverse engineer or otherwise attempt to determine the structure or sequence of the product.



For full product information, images and publications, please visit our [website](#).

DATA IMAGES

**GTX120858 WB Image**

STCH antibody detects STCH protein by western blot analysis.

A. 30 μ g U87-MG whole cell lysate/extract

B. 30 μ g SK-N-SH whole cell lysate/extract

C. 30 μ g IMR32 whole cell lysate/extract

D. 30 μ g SK-N-AS whole cell lysate/extract

10 % SDS-PAGE

STCH antibody (GTX120858) dilution: 1:1000

GTX120858 detects a 60 kDa band consistent with the finding in [EMBO J. 13, 1216-1225 \(1994\)](#).



For full product information, images and publications, please visit our [website](#).