

## STCH antibody

**Cat. No. GTX120858**

<b>Host</b>	Rabbit
<b>Clonality</b>	Polyclonal
<b>Isotype</b>	IgG
<b>Applications</b>	WB
<b>Reactivity</b>	Human

**Package**  
100 µl, 25 µl

## Applications

**Application Note**

\*Optimal dilutions/concentrations should be determined by the researcher.

Suggested dilution	Recommended dilution
--------------------	----------------------

WB	1:500-1:3000
----	--------------

Not tested in other applications.

<b>Calculated MW</b>	52 kDa. ( <a href="#">Note</a> )
----------------------	----------------------------------

<b>Observed MW (kDa)</b>	60 kDa. The observed M.W. is based on the following publication. PMID: 8131751
--------------------------	--

## Properties

<b>Form</b>	Liquid
-------------	--------

<b>Buffer</b>	0.1M Tris, 0.1M Glycine, 20% Glycerol
---------------	---------------------------------------

<b>Preservative</b>	0.01% Thimerosal
---------------------	------------------

<b>Storage</b>	Store as concentrated solution. Centrifuge briefly prior to opening vial. For short-term storage (1-2 weeks), store at 4°C. For long-term storage, aliquot and store at -20°C or below. Avoid multiple freeze-thaw cycles.
----------------	--

<b>Concentration</b>	0.82 mg/ml (Please refer to the vial label for the specific concentration.)
----------------------	---

<b>Immunogen</b>	Recombinant protein encompassing a sequence within the center region of human STCH. The exact sequence is proprietary.
------------------	--

<b>Purification</b>	Purified by antigen-affinity chromatography.
---------------------	--

<b>Conjugation</b>	Unconjugated
--------------------	--------------

**Note**

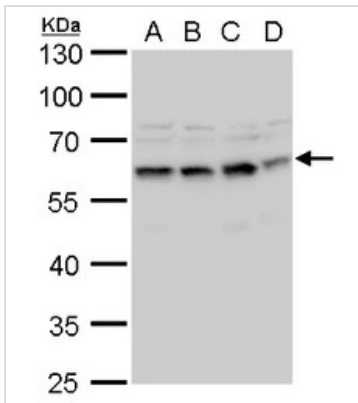
For laboratory research use only. Not for any clinical, therapeutic, or diagnostic use in humans or animals. Not for animal or human consumption.

Purchasers shall not, and agree not to enable third parties to, analyze, copy, reverse engineer or otherwise attempt to determine the structure or sequence of the product.



For full product information, images and publications, please visit our [website](#).

## DATA IMAGES

**GTX120858 WB Image**

STCH antibody detects STCH protein by western blot analysis.

A. 30  $\mu$ g U87-MG whole cell lysate/extract

B. 30  $\mu$ g SK-N-SH whole cell lysate/extract

C. 30  $\mu$ g IMR32 whole cell lysate/extract

D. 30  $\mu$ g SK-N-AS whole cell lysate/extract

10 % SDS-PAGE

STCH antibody (GTX120858) dilution: 1:1000

GTX120858 detects a 60 kDa band consistent with the finding in [EMBO J. 13, 1216-1225 \(1994\)](#).



For full product information, images and publications, please visit our [website](#).