

GFP antibody [1GFP63]

Cat. No. GTX12091

Host	Mouse
Clonality	Monoclonal
Isotype	IgG2a
Applications	WB, ELISA
Reactivity	Species independent

Package

50 µl

Applications

Application Note

WB: Use at a dilution of 1/1000. Predicted molecular weight: 27 kDa. Optimal dilutions/concentrations should be determined by the end user.

Properties

Form	Liquid
Buffer	Ascites
Preservative	No preservatives
Storage	Store as concentrated solution. Centrifuge briefly prior to opening vial. For short-term storage (1-2 weeks), store at 4°C. For long-term storage, aliquot and store at -20°C or below. Avoid multiple freeze-thaw cycles.
Concentration	Batch dependent (Please refer to the vial label for the specific concentration.)
Immunogen	Recombinant full length protein.
Conjugation	Unconjugated

Note

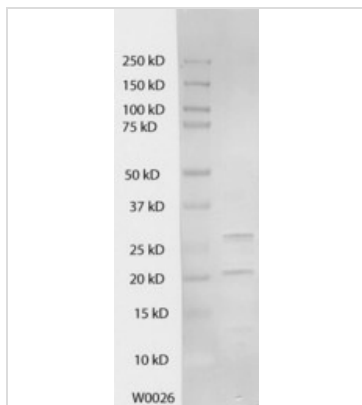
For laboratory research use only. Not for any clinical, therapeutic, or diagnostic use in humans or animals. Not for animal or human consumption.

Purchasers shall not, and agree not to enable third parties to, analyze, copy, reverse engineer or otherwise attempt to determine the structure or sequence of the product.



For full product information, images and publications, please visit our [website](#).

DATA IMAGES

**GTX12091 WB Image**

Western blot analysis using GFP antibody. Approx MW ~26kDa



For full product information, images and publications, please visit our [website](#).