

GLUT5 antibody

Cat. No. GTX12098

Host	Rabbit
Clonality	Polyclonal
Isotype	IgG
Applications	WB, IHC-P, IHC-Fr
Reactivity	Mouse, Rat

References (4)

Package

100 µg

Applications

Application Note

*Optimal dilutions/concentrations should be determined by the researcher.

Suggested dilution	Recommended dilution
WB	0.1-0.5µg/ml
IHC-P	0.5-1µg/ml
IHC-Fr	0.5-1µg/ml

Not tested in other applications.

Calculated MW 55 kDa. ([Note](#))

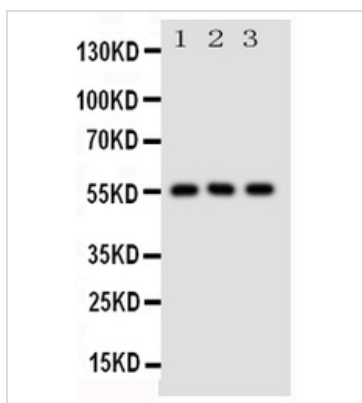
Properties

Form	Liquid
Buffer	0.1% Na ₂ HPO ₄ , 0.45% NaCl, 2.5% BSA
Preservative	0.025% Thimerosal, 0.025% Sodium azide
Storage	Store as concentrated solution. Centrifuge briefly prior to opening vial. For short-term storage (1-2 weeks), store at 4°C. For long-term storage, aliquot and store at -20°C or below. Avoid multiple freeze-thaw cycles.
Concentration	500 µg/ml (Please refer to the vial label for the specific concentration.)
Immunogen	A synthetic peptide corresponding to a sequence in the middle region of mouse SLC2A5 (232-251aa ALQTLRGWKDVHLEMEEIRK), different from the related rat sequence by two amino acids.
Purification	Purified by antigen-affinity chromatography
Conjugation	Unconjugated
Note	For laboratory research use only. Not for any clinical, therapeutic, or diagnostic use in humans or animals. Not for animal or human consumption. Purchasers shall not, and agree not to enable third parties to, analyze, copy, reverse engineer or otherwise attempt to determine the structure or sequence of the product.



For full product information, images and publications, please visit our [website](#).

DATA IMAGES

**GTX12098 WB Image**

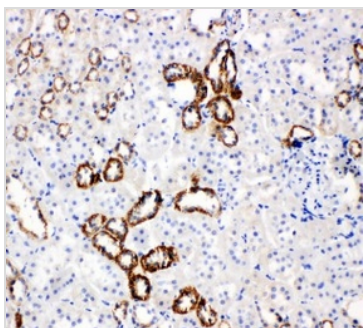
WB analysis of various samples using GTX12098 GLUT5 antibody.

Lane 1 : rat kidney tissue lysate at 50ug

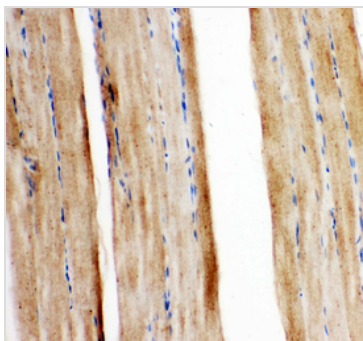
Lane 2 : rat liver tissue lysate at 50ug

Lane 3 : mouse kidney tissue lysate at 50ug

Dilution : 0.5 μ g/mL

**GTX12098 IHC-P Image**

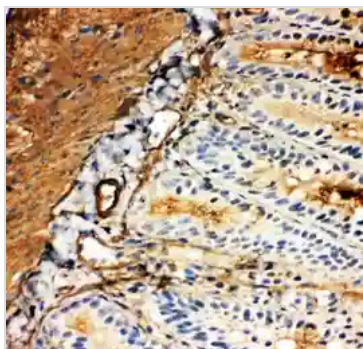
IHC-P analysis of rat kidney tissue using GTX12098 GLUT5 antibody.

**GTX12098 IHC-P Image**

IHC-P analysis of mouse tissue using GTX12098 GLUT5 antibody.

Antigen retrieval : Heat mediated antigen retrieval was performed in citrate buffer (pH6, epitope retrieval solution) for 20 mins

Dilution : 1 μ g/ml

**GTX12098 IHC-Fr Image**

IHC-Fr analysis of rat intestine tissue using GTX12098 GLUT5 antibody.



For full product information, images and publications, please visit our [website](#).