

SEMA4B antibody

Cat. No. GTX121035

Host	Rabbit
Clonality	Polyclonal
Isotype	IgG
Applications	WB, IHC-P
Reactivity	Human, Mouse

References (1)

Package

100 µl, 25 µl

Applications

Application Note

*Optimal dilutions/concentrations should be determined by the researcher.

Suggested dilution	Recommended dilution
WB	1:500-1:3000
IHC-P	1:100-1:1000

Not tested in other applications.

Calculated MW	92 kDa. (Note)
Product Note	KO/KD validation is based on published data (PMID: 29311693).

Properties

Form	Liquid
Buffer	0.1M Tris, 0.1M Glycine, 20% Glycerol
Preservative	0.01% Thimerosal
Storage	Store as concentrated solution. Centrifuge briefly prior to opening vial. For short-term storage (1-2 weeks), store at 4°C. For long-term storage, aliquot and store at -20°C or below. Avoid multiple freeze-thaw cycles.
Concentration	1 mg/ml (Please refer to the vial label for the specific concentration.)
Immunogen	Recombinant protein encompassing a sequence within the Extracellular domain of human SEMA4B. The exact sequence is proprietary.
Purification	Purified by antigen-affinity chromatography.
Conjugation	Unconjugated

Note

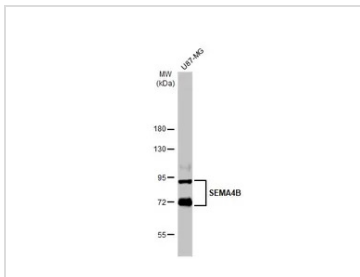
For laboratory research use only. Not for any clinical, therapeutic, or diagnostic use in humans or animals. Not for animal or human consumption.

Purchasers shall not, and agree not to enable third parties to, analyze, copy, reverse engineer or otherwise attempt to determine the structure or sequence of the product.



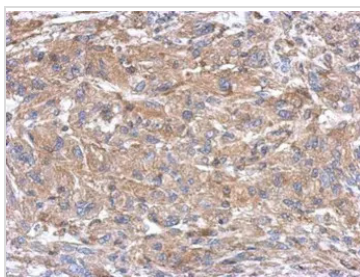
For full product information, images and publications, please visit our [website](#).

DATA IMAGES



GTX121035 WB Image

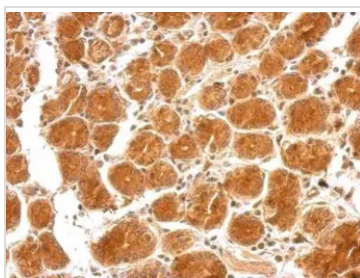
Whole cell extract (30 µg) was separated by 7.5% SDS-PAGE, and the membrane was blotted with SEMA4B antibody (GTX121035) diluted at 1:1000. The HRP-conjugated anti-rabbit IgG antibody (GTX213110-01) was used to detect the primary antibody.



GTX121035 IHC-P Image

Immunohistochemical analysis of paraffin-embedded U373 xenograft, using SEMA4B(GTX121035) antibody at 1:500 dilution.

Antigen Retrieval: Trilogy™ (EDTA based, pH 8.0) buffer, 15min



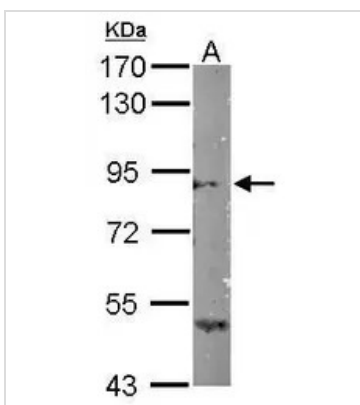
GTX121035 IHC-P Image

SEMA4B antibody detects SEMA4B protein at cytosol on human colon carcinoma by immunohistochemical analysis.

Sample: Paraffin-embedded colon carcinoma.

SEMA4B antibody (GTX121035) dilution: 1:500.

Antigen Retrieval: Trilogy™ (EDTA based, pH 8.0) buffer, 15min



GTX121035 WB Image

Sample (50 ug of whole cell lysate)

A: Mouse brain

7.5% SDS PAGE

GTX121035 diluted at 1:1000



For full product information, images and publications, please visit our [website](https://www.genetex.com).