

## FABP5 antibody

Cat. No. GTX12109

<b>Host</b>	Rabbit
<b>Clonality</b>	Polyclonal
<b>Isotype</b>	IgG
<b>Applications</b>	WB, IHC-P
<b>Reactivity</b>	Mouse, Rat

References ( 1 )

Package

100 µg

## Applications

## Application Note

\*Optimal dilutions/concentrations should be determined by the researcher.

Suggested dilution	Recommended dilution
WB	0.1-0.5µg/ml
IHC-P	0.5-1µg/ml

Not tested in other applications.

**Calculated MW** 15 kDa. ( [Note](#) )

## Properties

<b>Form</b>	Liquid
<b>Buffer</b>	0.1% Na <sub>2</sub> HPO <sub>4</sub> , 0.45% NaCl, 2.5% BSA
<b>Preservative</b>	0.025% Thimerosal, 0.025% Sodium azide
<b>Storage</b>	Store as concentrated solution. Centrifuge briefly prior to opening vial. For short-term storage (1-2 weeks), store at 4°C. For long-term storage, aliquot and store at -20°C or below. Avoid multiple freeze-thaw cycles.
<b>Concentration</b>	500 µg/ml (Please refer to the vial label for the specific concentration.)
<b>Immunogen</b>	A synthetic peptide corresponding to a sequence at the N-terminus of mouse Fatty Acid Binding Protein 5(10-23aa KWRLMESHGFEEYM), different from the related rat sequence by two amino acids.
<b>Purification</b>	Purified by antigen-affinity chromatography
<b>Conjugation</b>	Unconjugated

## Note

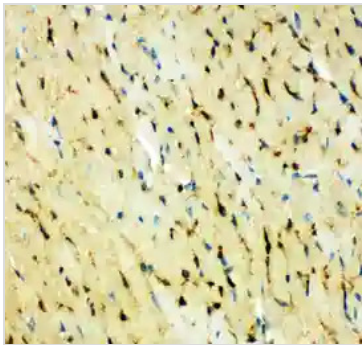
For laboratory research use only. Not for any clinical, therapeutic, or diagnostic use in humans or animals. Not for animal or human consumption.

Purchasers shall not, and agree not to enable third parties to, analyze, copy, reverse engineer or otherwise attempt to determine the structure or sequence of the product.



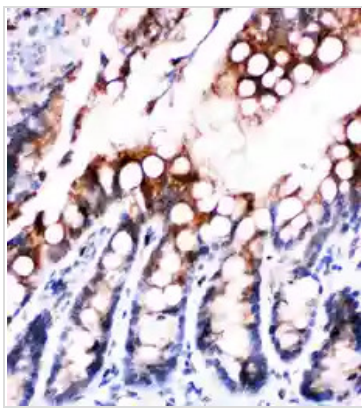
For full product information, images and publications, please visit our [website](#).

## DATA IMAGES



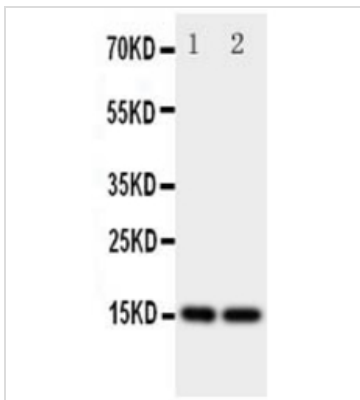
### GTX12109 IHC-P Image

IHC-P analysis of mouse cardiac muscle tissue using GTX12109 FABP5 antibody.



### GTX12109 IHC-P Image

IHC-P analysis of rat intestine tissue using GTX12109 FABP5 antibody.



### GTX12109 WB Image

WB analysis of various samples using GTX12109 FABP5 antibody.

Lane 1 : rat liver tissue lysate at 50ug

Lane 2 : rat kidney tissue lysate at 50ug

Dilution : 0.5 µg/mL



For full product information, images and publications, please visit our [website](#).