

## UBXN1 antibody

Cat. No. GTX121127

Host	Rabbit
Clonality	Polyclonal
Isotype	IgG
Applications	WB, ICC/IF, IHC-P
Reactivity	Human, Mouse

Package  
100 µl, 25 µl

## Applications

## Application Note

\*Optimal dilutions/concentrations should be determined by the researcher.

Suggested dilution	Recommended dilution
WB	1:500-1:3000
ICC/IF	1:100-1:1000
IHC-P	1:100-1:1000

Not tested in other applications.

Calculated MW 33 kDa. ( [Note](#) )

## Properties

Form	Liquid
Buffer	0.1M Tris, 0.1M Glycine, 20% Glycerol
Preservative	0.01% Thimerosal
Storage	Store as concentrated solution. Centrifuge briefly prior to opening vial. For short-term storage (1-2 weeks), store at 4°C. For long-term storage, aliquot and store at -20°C or below. Avoid multiple freeze-thaw cycles.
Concentration	0.78 mg/ml (Please refer to the vial label for the specific concentration.)
Immunogen	Recombinant protein encompassing a sequence within the center region of human UBXN1. The exact sequence is proprietary.
Purification	Purified by antigen-affinity chromatography.
Conjugation	Unconjugated

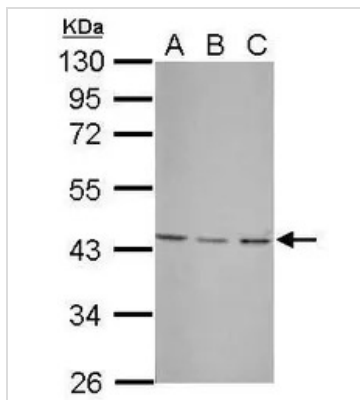
## Note

For laboratory research use only. Not for any clinical, therapeutic, or diagnostic use in humans or animals. Not for animal or human consumption.

Purchasers shall not, and agree not to enable third parties to, analyze, copy, reverse engineer or otherwise attempt to determine the structure or sequence of the product.



For full product information, images and publications, please visit our [website](#).

**DATA IMAGES**

**GTX121127 WB Image**

Sample (30 ug of whole cell lysate)

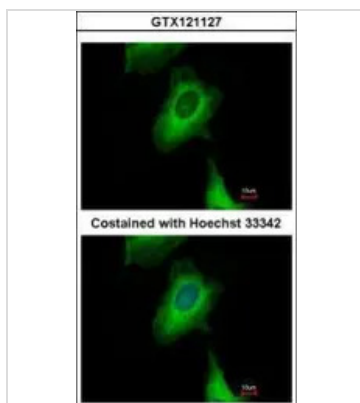
A: NIH-3T3

B: JC

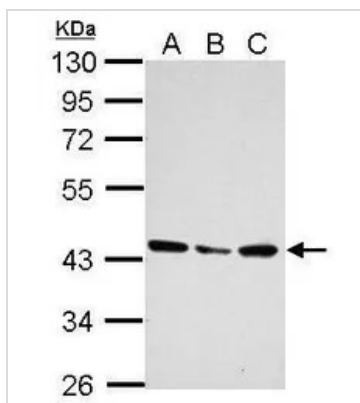
C: BCL-1

10% SDS PAGE

GTX121127 diluted at 1:3000


**GTX121127 ICC/IF Image**

Immunofluorescence analysis of methanol-fixed HeLa, using UBXN1(GTX121127) antibody at 1:500 dilution.


**GTX121127 WB Image**

Sample (30 ug of whole cell lysate)

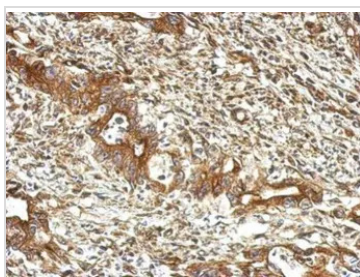
A: 293T

B: A431

C: HeLa

10% SDS PAGE

GTX121127 diluted at 1:1000


**GTX121127 IHC-P Image**

Immunohistochemical analysis of paraffin-embedded human colon carcinoma, using UBXN1(GTX121127) antibody at 1:500 dilution.

Antigen Retrieval: Trilogy™ (EDTA based, pH 8.0) buffer, 15min



For full product information, images and publications, please visit our [website](https://www.genetex.com).