

TLR8 antibody [44C143]

Cat. No. GTX12120

Host	Mouse
Clonality	Monoclonal
Isotype	IgG1
Applications	WB, IHC-P, FCM, MS
Reactivity	Human, Mouse

Package
50 µg

Applications

Application Note

*Optimal dilutions/concentrations should be determined by the researcher.

Suggested dilution	Recommended dilution
WB	1 - 3 µg/ml
IHC-P	5 µg/ml
FCM	0.5 - 1 µg / 10 ⁶ cells
MS	Assay dependent

Not tested in other applications.

Calculated MW 120 kDa. ([Note](#))

Properties

Form	Liquid
Buffer	PBS
Preservative	0.05% Sodium azide
Storage	Store as concentrated solution. Centrifuge briefly prior to opening vial. For short-term storage (1-2 weeks), store at 4°C. For long-term storage, aliquot and store at -20°C or below. Avoid multiple freeze-thaw cycles.
Concentration	1 mg/ml (Please refer to the vial label for the specific concentration.)
Immunogen	This antibody was developed against a KLH-conjugated synthetic peptide of human TLR8, within amino acids 750-850.
Purification	Protein G purified
Conjugation	Unconjugated

Note

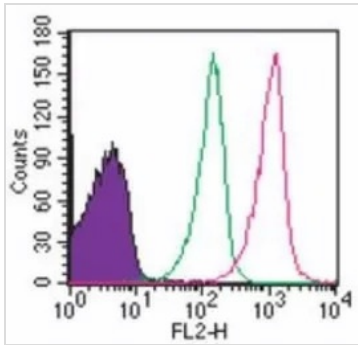
For laboratory research use only. Not for any clinical, therapeutic, or diagnostic use in humans or animals. Not for animal or human consumption.

Purchasers shall not, and agree not to enable third parties to, analyze, copy, reverse engineer or otherwise attempt to determine the structure or sequence of the product.



For full product information, images and publications, please visit our [website](#).

DATA IMAGES



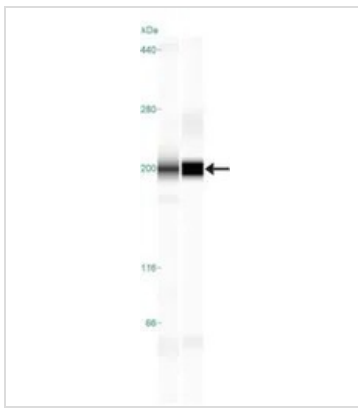
GTX12120 FCM Image

FACS (Intracellular staining) analysis of human lymphocytes using GTX12120 TLR8 antibody [44C143].

Red : Primary antibody

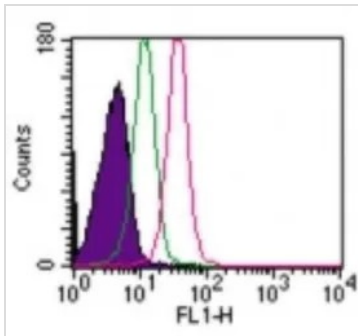
Green : isotype control

Shaded histogram : cell only



GTX12120 WB Image

WB analysis of Ramos (left) and human spleen (right) lysate using GTX12120 TLR8 antibody [44C143].



GTX12120 FCM Image

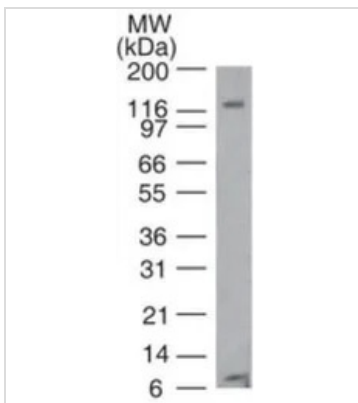
FACS analysis of 10^6 human lymphocytes using GTX12120 TLR8 antibody [44C143].

Red : Primary antibody

Green : isotype control

Shaded histogram : cell only

Antibody amount : 1 μ g



GTX12120 WB Image

WB analysis of Ramos cell lysate using GTX12120 TLR8 antibody [44C143].



For full product information, images and publications, please visit our [website](https://www.genetex.com).