

TRAIL antibody [55B709.3]

Cat. No. GTX12124

Host	Mouse
Clonality	Monoclonal
Isotype	IgG1
Applications	WB, IHC-P
Reactivity	Human, Cat, Dog

Package
50 µg

Applications

Application Note

*Optimal dilutions/concentrations should be determined by the researcher.

Suggested dilution	Recommended dilution
WB	1 - 2 µg/ml
IHC-P	5 µg/ml

Not tested in other applications.

Calculated MW 33 kDa. ([Note](#))

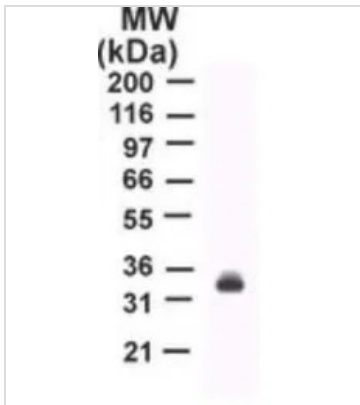
Properties

Form	Liquid
Buffer	PBS, 0.05% BSA
Preservative	0.05% Sodium azide
Storage	Store as concentrated solution. Centrifuge briefly prior to opening vial. For short-term storage (1-2 weeks), store at 4°C. For long-term storage, aliquot and store at -20°C or below. Avoid multiple freeze-thaw cycles.
Concentration	0.5 mg/ml (Please refer to the vial label for the specific concentration.)
Immunogen	This monoclonal antibody was raised against a peptide corresponding to amino acids 17-35 of human TRAIL. This peptide sequence has been shown to be involved in TRAIL and DR5 (TRAIL-R2) interaction.
Purification	Protein G purified
Conjugation	Unconjugated
Note	For laboratory research use only. Not for any clinical, therapeutic, or diagnostic use in humans or animals. Not for animal or human consumption. Purchasers shall not, and agree not to enable third parties to, analyze, copy, reverse engineer or otherwise attempt to determine the structure or sequence of the product.

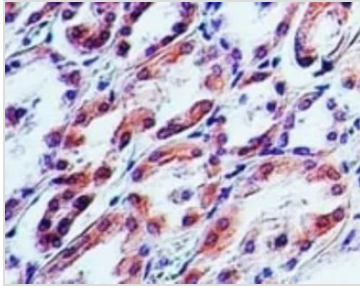


For full product information, images and publications, please visit our [website](#).

DATA IMAGES

**GTX12124 WB Image**

WB analysis of Jurkat cell lysate using GTX12124 TRAIL antibody [55B709.3].

**GTX12124 IHC-P Image**

IHC-P analysis of human kidney tissue using GTX12124 TRAIL antibody [55B709.3].

Dilution : 5 µg/ml



For full product information, images and publications, please visit our [website](#).